



مصرف الإمارات العربية المتحدة المركزي
CENTRAL BANK OF THE U.A.E.

النشرة الاحصائية الشهرية
- البيانات المصرفية والنقدية -
أكتوبر 2024

Monthly Statistical Bulletin
- Banking & Monetary Statistics -
October 2024

Contents

Tables		Pages	Tables		Pages
1	Selected Monetary and Banking Indicators	4	30	Deposits distributed Residents / Non Residents (All Banks)	39 ~ 40
2	Monetary Survey	5 ~ 6	31	Deposits distributed Residents / Non Residents (National Banks)	41
3	Monthly Changes in Factors Affecting Money Supply	7 ~ 8	32	Deposits distributed Residents / Non Residents (Foreign Banks)	42
4	UAE Monetary Base (Monthly)	9	33	Deposits distributed Residents / Non Residents (Conventional Banks)	43
5	Balance Sheet - Central Bank of the UAE	10 ~ 11	34	Deposits distributed Residents / Non Residents (Islamic Banks)	44
6	Central Bank International Reserves	12	35	Classification of Deposits by Size (Quarterly)	45
7 - 8	Aggregated Balance Sheet of Banks - Assets & Liabilities (All Banks)	13 ~ 15	36	Deposits by Type and Currency (All Banks)	46
9	Aggregated Balance Sheet of Banks - Assets (National Banks)	16	37	Deposits by Type and Currency (National Banks)	47
10	Aggregated Balance Sheet of Banks - Liabilities (National Banks)	17	38	Deposits by Type and Currency (Foreign Banks)	48
11	Aggregated Balance Sheet of Banks - Assets (Foreign Banks)	18	39	Deposits by Type and Currency (Conventional Banks)	49
12	Aggregated Balance Sheet of Banks - Liabilities (Foreign Banks)	19	40	Deposits by Type and Currency (Islamic Banks)	50
13	Aggregated Balance Sheet of Banks - Assets (Conventional Banks)	20	41	Time Deposits by Maturity (All Banks)	51
14	Aggregated Balance Sheet of Banks - Liabilities (Conventional Banks)	21	42	Time Deposits by Maturity (National Banks)	52
15	Aggregated Balance Sheet of Banks - Assets (Islamic Banks)	22	43	Time Deposits by Maturity (Foreign Banks)	53
16	Aggregated Balance Sheet of Banks - Liabilities (Islamic Banks)	23	44	Time Deposits by Maturity (Conventional Banks)	54
17	Aggregated Memoranda Accounts of Banks	24	45	Time Deposits by Maturity (Islamic Banks)	55
18	Banks' Foreign Assets and Liabilities (All Banks)	25 ~ 26	46	Currency Issued	56
19	Banks' Foreign Assets and Liabilities (National Banks)	27	47	Cheques Cleared Statistics	57
20	Banks' Foreign Assets and Liabilities (Foreign Banks)	28	48	UAE Domestic Fund Transfer System Statistics	58
21	Banks' Foreign Assets and Liabilities (Conventional Banks)	29	49	Banks and Branches Network Statistics (Quarterly)	59
22	Banks' Foreign Assets and Liabilities (Islamic Banks)	30			
23	Domestic Credit (All Banks)	31 ~ 32			
24	Domestic Credit (National Banks)	33			
25	Domestic Credit (Foreign Banks)	34			
26	Domestic Credit (Conventional Banks)	35			
27	Domestic Credit (Islamic Banks)	36			
28	Bank Credit to Residents by Economic Activity (Quarterly)	37			
29	Bank Credit to Non - Residents by Economic Activity (Quarterly)	38			

Contents (Contd)

Note:

Data are as at the end of period unless otherwise indicated.

Abbreviations & Notations :

UAE Dirhams	AED
Zero or Insignificant	(-)
Local Currency	LCY
Foreign Currency	FCY

Definitions :

Government

Of the Seven Emirates.

Monetary Base

Monetary Base, defined as the sum of Currency Issued (Currency in Circulation outside Banks and Cash at Banks), Total Banks' Reserves & Current Accounts at the Central Bank and Monetary Bills & Islamic Certificates of Deposits held by Banks

Gross International Reserves

Gross International Reserves , defined as the sum of Current Account Balances & Deposits with Banks abroad , Foreign Investments , IMF Reserves & SDR Holdings and Other Foreign Assets

Money Supply (M₁)

Consists of currency in circulation outside banks plus monetary deposits in local currency with banks (all short-term deposits on which bank customer can withdraw without prior notice)

Money Supply (M₂)

Consists of Money Supply (M₁) plus quasi-monetary deposits (Resident Time and Savings Deposits in Dirham + Resident Deposits in foreign currencies)

Money Supply (M₃)

Consists of Money Supply (M₂) plus Resident Government deposits with Banks & Central Bank

Certificates of Deposits / Monetary Bills

Certificates/ Monetary Bills issued by the Central Bank and sold to banks and other stakeholders to absorb excess liquidity with the latter and are also used as an indicator to determine domestic interest rates.

Table 1 : Selected Monetary and Banking Indicators

(In Millions of AED)													
Indicator	Dec 2020	Dec 2021	Sep 2022	Dec 2022	Mar 2023	Jun 2023	Sep 2023	Dec 2023	Mar 2024	Jun 2024	Aug 2024	Sep 2024	Oct 2024 *
Central Bank of the UAE													
Total Assets/Liabilities	470,526	521,538	484,633	552,555	594,115	649,423	639,574	720,801	771,229	806,395	847,948	854,484	851,209
Gross International Reserves **	391,857	481,528	438,117	508,402	552,244	606,870	598,348	695,887	746,218	785,003	826,763	833,319	829,830
Money Supply Indicators													
Money Supply M ₁	600,060	701,853	722,918	737,562	759,281	784,017	795,469	829,259	877,989	884,081	888,094	896,320	909,908
Money Supply M ₂	1,478,607	1,563,025	1,645,538	1,703,625	1,788,372	1,855,306	1,908,088	2,022,886	2,134,493	2,169,342	2,211,185	2,249,664	2,270,705
Money Supply M ₃	1,769,368	1,856,910	2,053,100	2,107,229	2,209,003	2,294,158	2,351,311	2,444,495	2,583,376	2,631,915	2,696,357	2,719,864	2,754,896
Banks													
Total Assets	3,188,014	3,321,488	3,583,013	3,667,611	3,764,720	3,873,060	3,951,887	4,071,099	4,254,514	4,310,154	4,378,018	4,401,679	4,456,847
Foreign Assets (Net)	133,471	154,708	355,562	384,084	419,893	406,351	455,087	472,198	504,884	468,136	508,677	506,227	591,278
Foreign Assets	849,077	933,169	1,144,270	1,191,027	1,221,886	1,220,740	1,270,026	1,313,494	1,382,299	1,362,839	1,405,894	1,384,716	1,489,920
Foreign Assets to Total Assets (%)	26.6%	28.1%	31.9%	32.5%	32.5%	31.5%	32.1%	32.3%	32.5%	31.6%	32.1%	31.5%	33.4%
Foreign Liabilities	715,606	778,461	788,708	806,943	801,993	814,389	814,939	841,296	877,415	894,703	897,217	878,489	898,642
Foreign Liabilities to Total Liabilities (%)	22.4%	23.4%	22.0%	22.0%	21.3%	21.0%	20.6%	20.7%	20.6%	20.8%	20.5%	20.0%	20.2%
Deposits ¹	1,884,545	1,996,527	2,186,962	2,222,226	2,305,909	2,381,999	2,420,871	2,521,902	2,657,279	2,692,570	2,740,500	2,761,410	2,802,522
Residents	1,682,102	1,765,533	1,958,348	2,009,696	2,092,554	2,170,851	2,230,771	2,319,855	2,436,348	2,470,748	2,528,008	2,547,941	2,578,921
of which: Corporate	606,207	671,422	738,143	790,086	821,786	863,558	896,382	976,967	1,020,461	1,046,617	1,070,072	1,080,537	1,101,555
Non-Residents	202,443	230,994	228,614	212,530	213,355	211,148	190,100	202,047	220,931	221,822	212,492	213,469	223,601
of which: Corporate	72,250	82,170	119,744	103,101	107,722	111,929	105,083	110,387	117,576	112,306	103,790	107,308	108,040
Bank Credit (Domestic)	1,596,786	1,618,957	1,655,408	1,650,937	1,673,785	1,717,116	1,740,086	1,737,691	1,776,591	1,816,380	1,830,378	1,859,739	1,870,670
of which: Credit to Private Sector ***	1,124,913	1,137,528	1,187,177	1,185,901	1,212,729	1,233,964	1,247,159	1,260,910	1,290,720	1,323,409	1,341,717	1,362,337	1,363,803
Total Number of National Banks and Branches													
Head Offices (Including specialized banks but excluding investment banks)	21	22	23	22	22	22	22	22	23	23	23	23	23
Branches	541	513	506	498	494	493	492	489	484	482	482	481	482
Pay Offices	23	20	21	21	21	21	21	21	21	21	21	21	21
Electronic Banking Service Units	34	41	44	45	47	47	47	46	46	46	46	46	46
Total Number of Foreign Banks and Branches													
Head Offices	37	37	37	39	39	39	39	39	38	38	38	38	38
of which: Full Fledged Commercial Banks	27	27	27	28	28	28	28	28	27	27	27	27	27
of which: Licensed Wholesale Banks	10	10	10	11	11	11	11	11	11	11	11	11	11
Branches	73	74	74	73	72	72	72	72	72	72	73	73	73
Pay Offices	1	1	1	1	1	1	1	1	1	1	1	1	1
Electronic Banking Service Units	23	21	21	21	21	21	21	21	21	21	21	21	22
Number of Employees in Banks (UAE) ²	33,444	33,491	35,157	35,830	36,314	36,737	37,394	38,168	37,494	37,811	37,811	38,572	38,572
Employed with National Banks ²	26,408	26,763	28,251	28,737	29,189	29,577	30,156	30,858	31,329	31,628	31,628	32,276	32,276
Employed with Foreign Banks ²	7,036	6,728	6,906	7,093	7,125	7,160	7,238	7,310	6,165	6,183	6,183	6,296	6,296

* Preliminary

** Central Bank Gross International Reserves = Current Account Balances & Deposits with Banks abroad+ Held-to-Maturity Foreign Securities + IMF Reserves and SDR Holdings + Other Foreign Assets

*** Including Claims on Other Financial Institutions

¹ Excluding Inter-Bank Deposits² Excluding Auxiliary Staff. Data Subject to Revision on Quarterly Basis

Table 2 : Monetary Survey

(In Millions of AED)													
Item	Dec 2020	Dec 2021	Sep 2022	Dec 2022	Mar 2023	Jun 2023	Sep 2023	Dec 2023	Mar 2024	Jun 2024	Aug 2024	Sep 2024	Oct 2024 *
Net International Reserves	514,516	620,848	780,083	860,973	955,341	996,308	1,038,059	1,145,619	1,235,567	1,237,905	1,305,553	1,317,294	1,406,101
Central Bank (Net)	381,045	466,140	424,521	476,889	535,448	589,957	582,972	673,421	730,683	769,769	796,876	811,067	814,823
Gross International Reserves	391,857	481,528	438,117	508,402	552,244	606,870	598,348	695,887	746,218	785,003	826,763	833,319	829,830
Foreign Liabilities	10,812	15,388	13,596	31,513	16,796	16,913	15,376	22,466	15,535	15,234	29,887	22,252	15,007
Banks (Net)	133,471	154,708	355,562	384,084	419,893	406,351	455,087	472,198	504,884	468,136	508,677	506,227	591,278
Foreign Assets	849,077	933,169	1,144,270	1,191,027	1,221,886	1,220,740	1,270,026	1,313,494	1,382,299	1,362,839	1,405,894	1,384,716	1,489,920
Foreign Liabilities	715,606	778,461	788,708	806,943	801,993	814,389	814,939	841,296	877,415	894,703	897,217	878,489	898,642
Net Domestic Assets	964,091	942,177	865,455	842,652	833,031	858,998	870,029	877,267	898,926	931,436	905,631	932,370	864,604
Claims on Private Sector	1,128,422	1,145,805	1,193,810	1,193,635	1,220,738	1,243,748	1,259,192	1,268,361	1,301,900	1,336,057	1,355,002	1,375,075	1,379,433
Net Claims on Government	86,739	76,994	-59,822	-53,219	-64,685	-79,711	-87,383	-104,582	-122,753	-131,801	-146,447	-132,968	-145,777
Claims on Government	378,299	371,314	348,393	351,101	356,668	359,660	356,348	317,569	326,651	331,245	339,184	337,665	338,852
Laibilities to Government	291,560	294,320	408,215	404,320	421,353	439,371	443,731	422,151	449,404	463,046	485,631	470,633	484,628
Claims on Official Entities	261,771	277,914	288,023	287,040	279,735	298,922	316,554	330,693	333,684	339,181	333,860	344,945	356,201
Claims on Nonbank Financial Institutions	28,208	26,608	25,388	25,674	25,346	23,457	20,968	30,370	28,002	26,470	25,820	26,499	26,241
Capital and Reserves	-419,445	-428,611	-425,666	-439,476	-444,921	-460,497	-475,256	-514,735	-502,771	-521,765	-543,441	-553,786	-556,231
Other Items (net)	-121,604	-156,534	-156,277	-171,002	-183,181	-166,920	-164,046	-132,840	-139,136	-116,705	-119,163	-127,396	-195,263
Money Supply M₁	600,060	701,853	722,918	737,562	759,281	784,017	795,469	829,259	877,989	884,081	888,094	896,320	909,908
Currency in Circulation Outside Banks	94,724	94,082	97,960	101,936	111,808	115,855	109,589	116,979	127,124	127,080	126,494	128,420	127,058
Monetary Deposits	505,336	607,771	624,958	635,626	647,473	668,162	685,880	712,280	750,865	757,001	761,600	767,900	782,849
Money Supply M₂	1,478,607	1,563,025	1,645,538	1,703,625	1,788,372	1,855,306	1,908,088	2,022,886	2,134,493	2,169,342	2,211,185	2,249,664	2,270,705
Quasi - Money	878,547	861,172	922,620	966,063	1,029,091	1,071,289	1,112,619	1,193,627	1,256,504	1,285,261	1,323,090	1,353,344	1,360,798
Foreign Currency Deposits	331,199	340,387	411,551	429,590	451,261	468,560	495,889	529,593	557,851	555,230	568,391	578,338	584,709
Dirham Deposits	547,348	520,785	511,069	536,473	577,830	602,729	616,730	664,034	698,653	730,031	754,699	775,006	776,089
Money Supply M₃	1,769,368	1,856,910	2,053,100	2,107,229	2,209,003	2,294,158	2,351,311	2,444,495	2,583,376	2,631,915	2,696,357	2,719,864	2,754,896
Government Deposits	290,761	293,885	407,562	403,604	420,631	438,852	443,223	421,609	448,883	462,574	485,172	470,200	484,191

* Preliminary

Monetary Aggregates

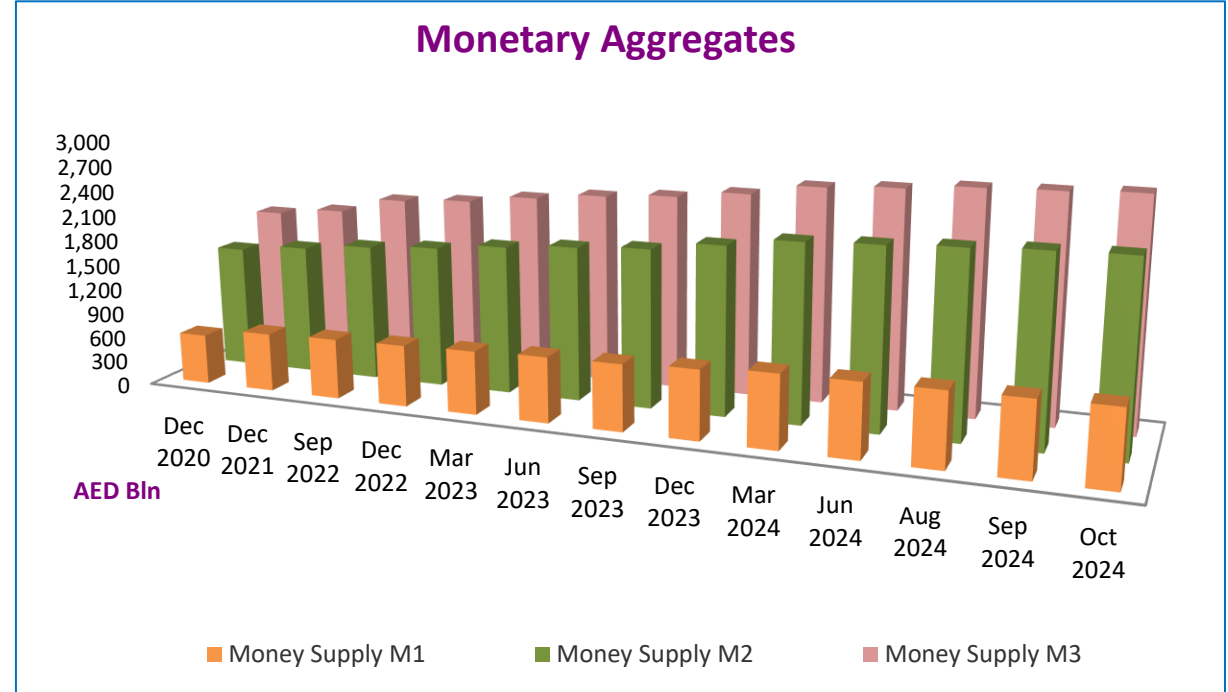
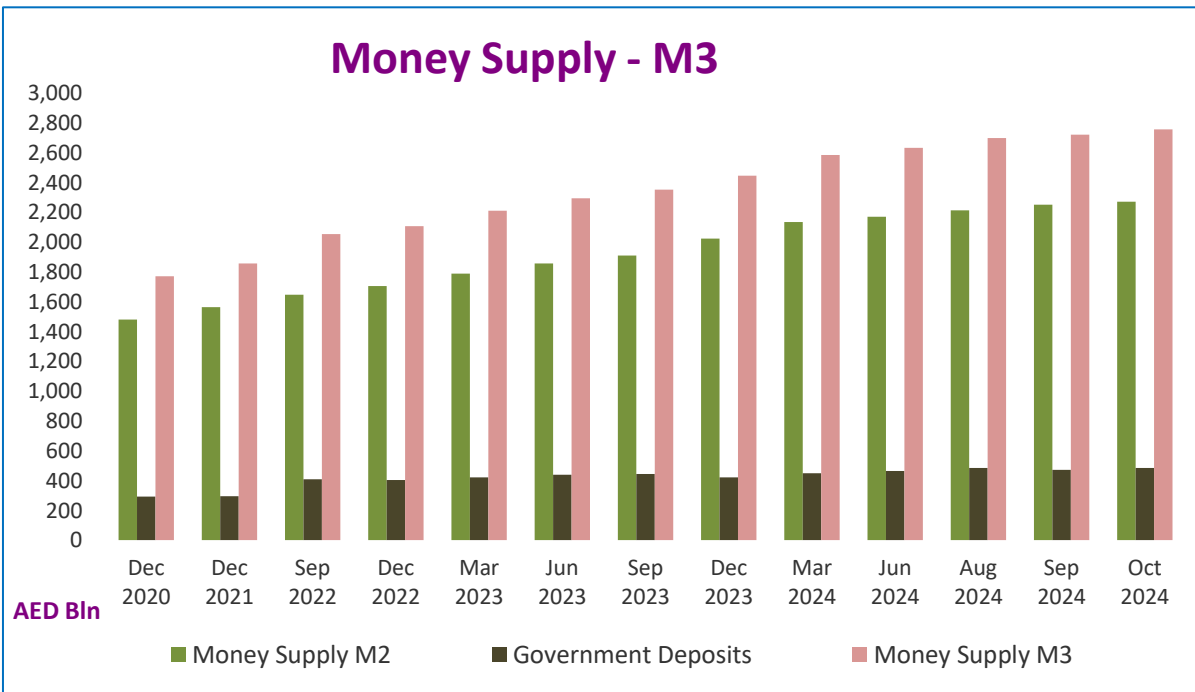
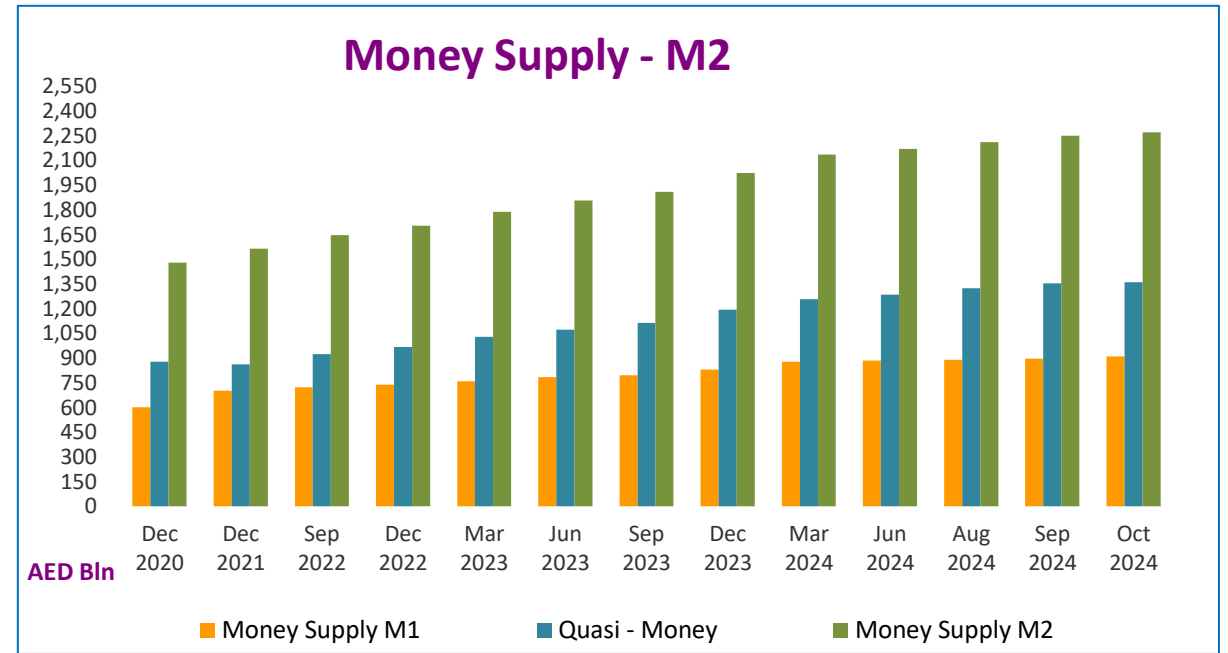
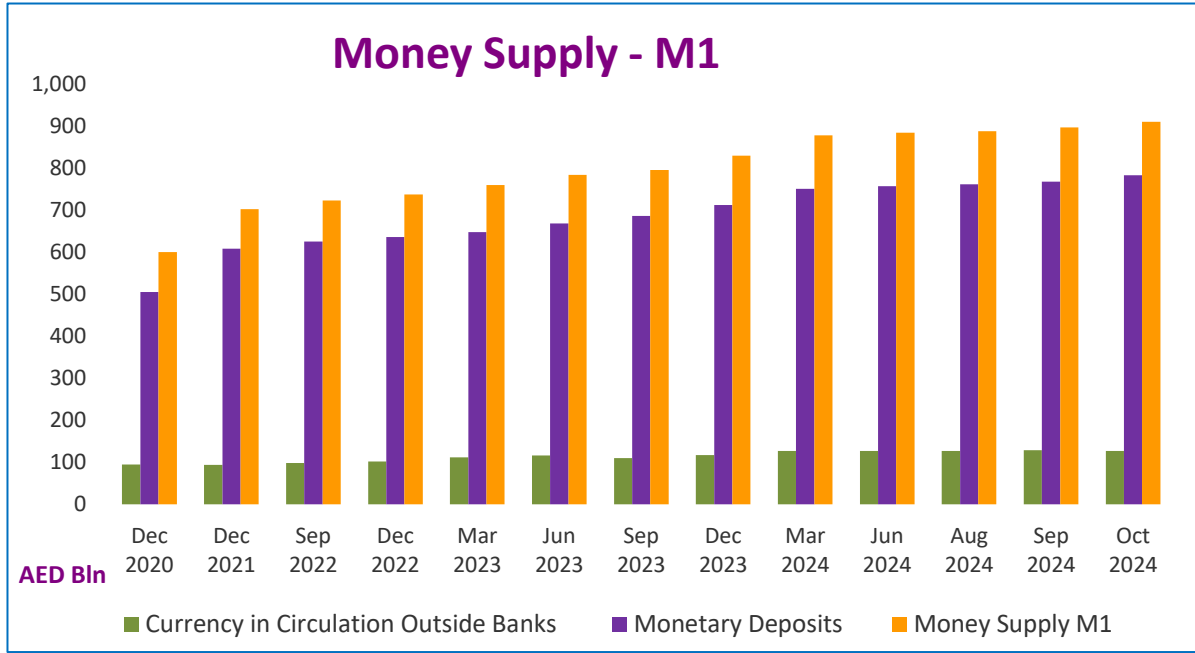


Table 3 : Monthly Changes in Factors Affecting Money Supply ¹

(In Millions of AED)												
Item	Dec 2021	Sep 2022	Dec 2022	Mar 2023	Jun 2023	Sep 2023	Dec 2023	Mar 2024	Jun 2024	Aug 2024	Sep 2024	Oct 2024 *
Net International Reserves	106,332	159,235	80,890	94,368	40,967	41,751	107,560	89,948	2,338	67,648	11,741	88,807
Central Bank (Net)	85,095	-41,619	52,368	58,559	54,509	-6,985	90,449	57,262	39,086	27,107	14,191	3,756
Gross International Reserves	89,671	-43,411	70,285	43,842	54,626	-8,522	97,539	50,331	38,785	41,760	6,556	-3,489
Foreign Liabilities	4,576	-1,792	17,917	-14,717	117	-1,537	7,090	-6,931	-301	14,653	-7,635	-7,245
Banks (Net)	21,237	200,854	28,522	35,809	-13,542	48,736	17,111	32,686	-36,748	40,541	-2,450	85,051
Foreign Assets	84,092	211,101	46,757	30,859	-1,146	49,286	43,468	68,805	-19,460	43,055	-21,178	105,204
Foreign Liabilities	62,855	10,247	18,235	-4,950	12,396	550	26,357	36,119	17,288	2,514	-18,728	20,153
Net Domestic Assets	-21,914	-76,722	-22,803	-9,621	25,967	11,031	7,238	21,659	32,510	-25,805	26,739	-67,765
Claims on Private Sector	17,383	48,005	-175	27,103	23,010	15,444	9,170	33,538	34,157	18,945	20,074	4,358
Net Claims on Government	-9,745	-136,816	6,603	-11,466	-15,026	-7,672	-17,199	-18,171	-9,048	-14,646	13,479	-12,809
Claims on Government	-6,985	-22,921	2,708	5,567	2,992	-3,312	-38,779	9,082	4,595	7,939	-1,519	1,186
Liabilities to Government	2,760	113,895	-3,895	17,033	18,018	4,360	-21,580	27,253	13,642	22,585	-14,998	13,995
Claims on Official Entities	16,143	10,109	-983	-7,305	19,187	17,632	14,138	2,992	5,497	-5,321	11,085	11,257
Claims on Nonbank Financial Institutions	-1,600	-1,221	286	-328	-1,889	-2,488	9,402	-2,368	-1,533	-649	679	-259
Capital and Reserves **	-9,166	2,945	-13,810	-5,445	-15,576	-14,759	-39,479	11,964	-18,994	-21,676	-10,345	-2,445
Other Items (net) **	-34,929	256	-14,725	-12,179	16,261	2,874	31,206	-6,296	22,431	-2,457	-8,233	-67,867
Money Supply M₁	101,793	21,065	14,644	21,719	24,736	11,452	33,790	48,730	6,092	4,013	8,225	13,588
Currency in Circulation Outside Banks	-642	3,878	3,976	9,872	4,047	-6,266	7,390	10,145	-44	-586	1,926	-1,361
Monetary Deposits	102,435	17,187	10,668	11,847	20,689	17,718	26,400	38,585	6,136	4,599	6,300	14,949
Money Supply M₂	84,418	82,513	58,087	84,747	66,934	52,782	114,798	111,607	34,849	41,843	38,479	21,041
Quasi - Money	-17,375	61,448	43,443	63,028	42,198	41,330	81,008	62,877	28,757	37,830	30,254	7,453
Foreign Currency Deposits	9,188	71,164	18,039	21,671	17,299	27,329	33,704	28,258	-2,622	13,162	9,947	6,371
Dirham Deposits	-26,563	-9,716	25,404	41,357	24,899	14,001	47,304	34,619	31,378	24,668	20,307	1,082
Money Supply M₃	87,542	196,190	54,129	101,774	85,155	57,153	93,184	138,881	48,539	64,441	23,508	35,032
Government Deposits	3,124	113,677	-3,958	17,027	18,221	4,371	-21,614	27,274	13,691	22,598	-14,972	13,991

¹ Indicates change from end of the previous reporting period data (Table 2 data)

* Preliminary

** (-) Indicates an Increase and (+) Indicates a Decrease

Factors Affecting Money Supply (M2)

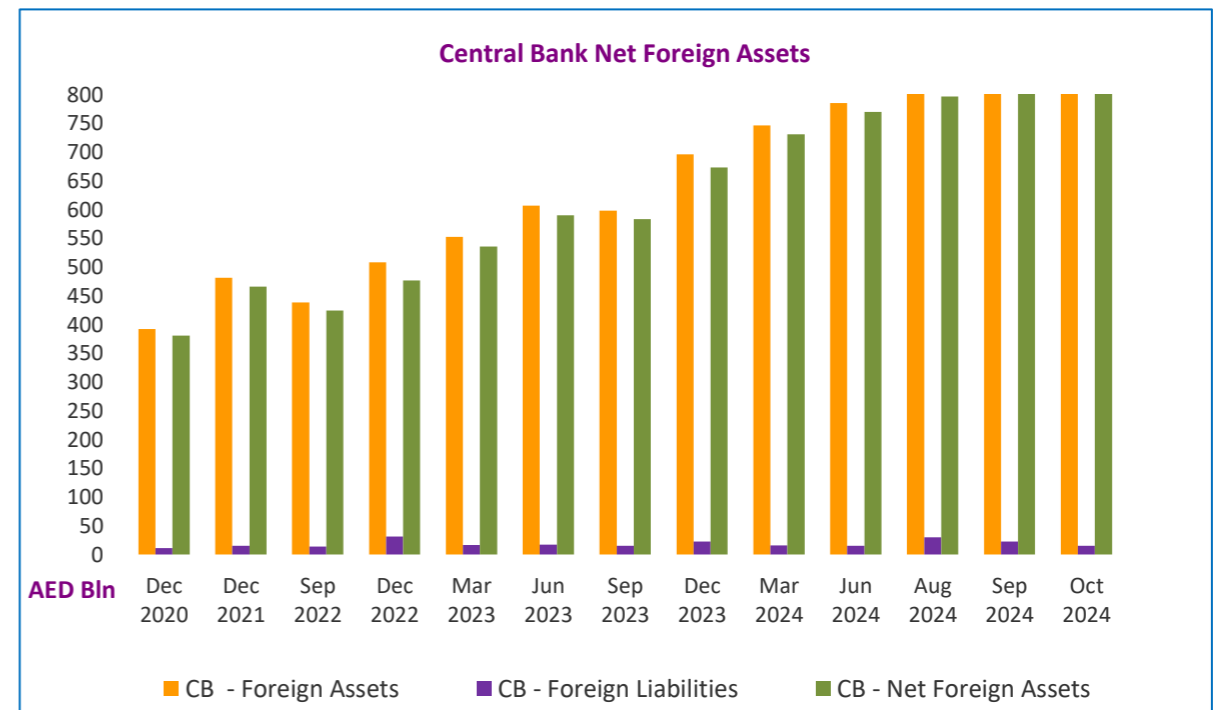
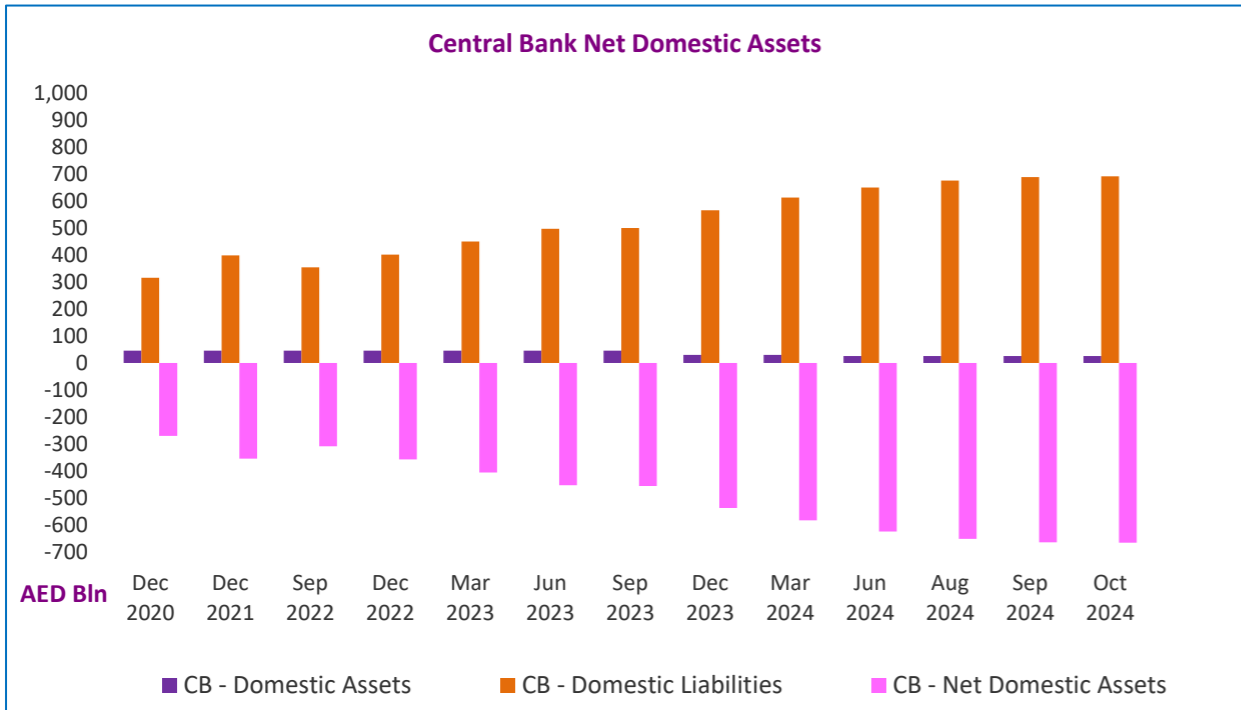
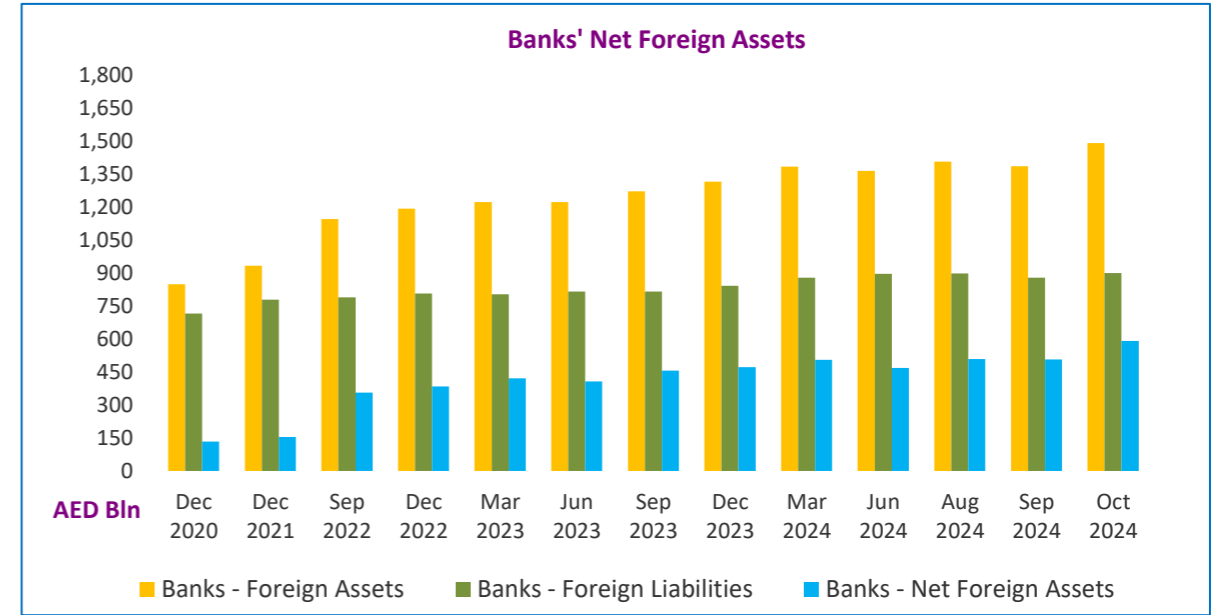
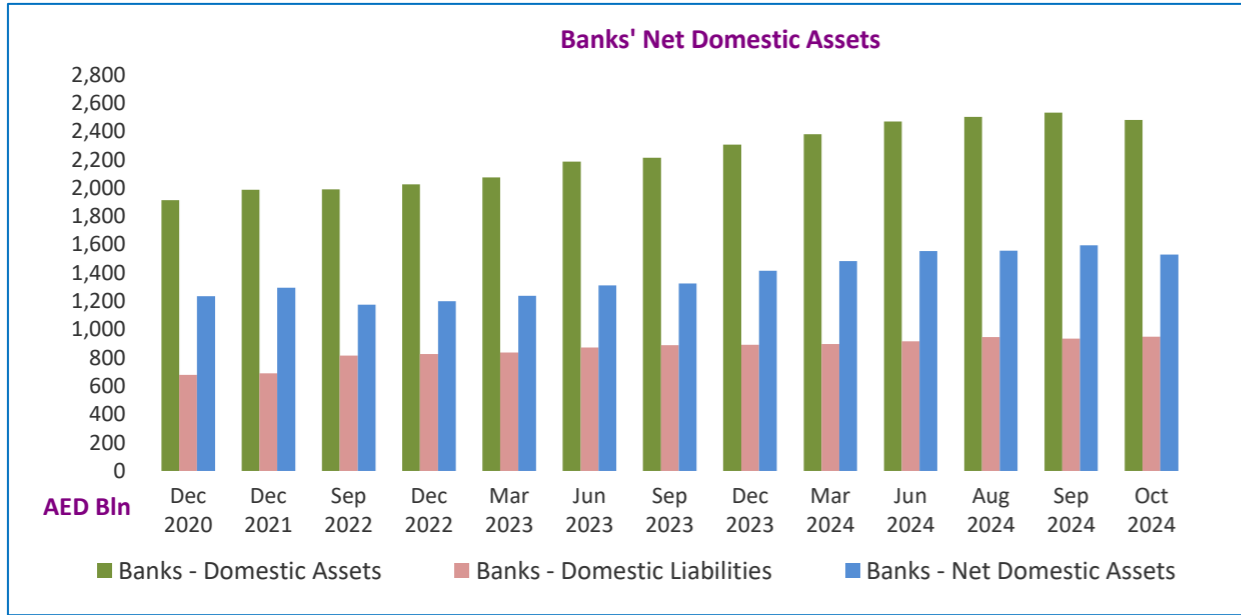


Table 4 : UAE Monetary Base (Monthly)

(In Millions of AED)														
Item	Dec 2020	Dec 2021	Sep 2022	Dec 2022	Mar 2023	Jun 2023	Sep 2023	Dec 2023	Mar 2024	Jun 2024	Aug 2024	Sep 2024	Oct 2024 *	
Monetary Base	427,445	484,025	461,467	512,273	555,755	611,344	597,311	658,748	703,660	724,982	734,921	743,456	742,974	
Components of Monetary Base	Currency Issued **	110,704	111,815	115,089	120,011	129,208	136,478	127,153	135,780	146,848	145,364	145,546	146,911	148,054
	Reserve Requirements	89,400	104,038	120,230	99,567	95,693	170,257	206,148	182,500	220,274	259,594	242,559	208,256	208,394
	Banks & OFCs Current Accounts & Overnight Deposits of Banks at CBUAE	98,016	103,444	80,441	127,947	134,875	98,891	63,390	126,857	72,422	93,097	105,903	147,361	130,580
	Monetary Bills & Islamic Certificates of Deposit	129,325	164,728	145,707	164,748	195,979	205,718	200,620	213,611	264,116	226,927	240,913	240,928	255,946

* Preliminary

** Currency Issued = currency in circulation plus cash at banks

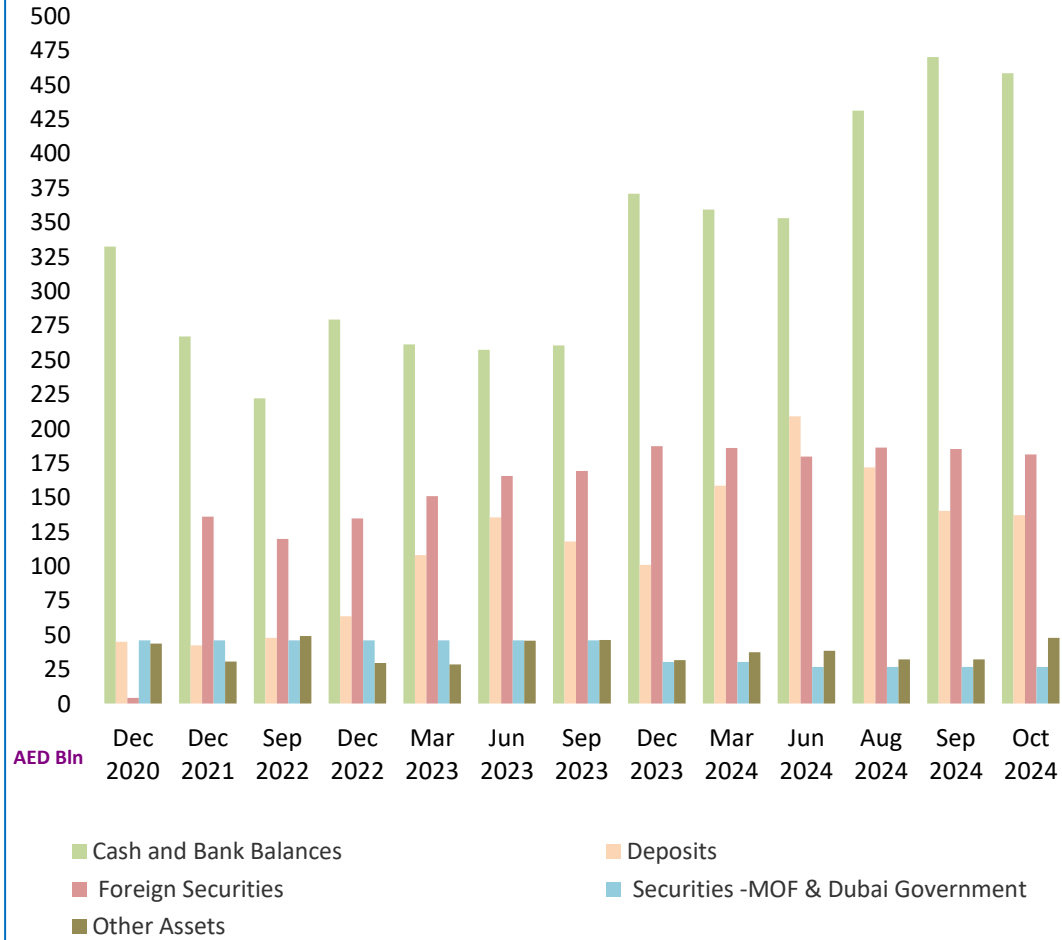
Table 5 : Balance Sheet - Central Bank of the UAE

(In Millions of AED)													
Item	Dec 2020	Dec 2021	Sep 2022	Dec 2022	Mar 2023	Jun 2023	Sep 2023	Dec 2023	Mar 2024	Jun 2024	Aug 2024	Sep 2024	Oct 2024 *
Assets													
Cash and Bank Balances	332,251	267,074	222,056	279,252	261,163	257,197	260,339	370,786	359,172	352,905	431,192	470,243	458,497
Deposits	44,802	42,230	47,794	63,425	107,821	135,343	117,812	100,957	158,456	208,782	171,701	140,199	137,003
Foreign Securities	4,012	135,875	119,763	134,543	150,917	165,420	169,242	187,168	185,833	179,722	186,199	185,137	181,234
Securities-Issued by Ministry of Finance & Dubai Government	45,902	45,903	45,903	45,902	45,902	45,902	45,902	30,379	30,379	26,707	26,707	26,707	26,707
Other Assets	43,559	30,456	49,117	29,433	28,312	45,561	46,279	31,511	37,389	38,279	32,149	32,198	47,768
Gold Bullion	12,862	11,913	12,749	16,045	17,413	16,768	16,261	18,147	19,615	20,467	22,021	23,185	24,464
Liquidity Support Facility	0	0	0	0	0	0	0	0	0	0	0	0	0
Other Assets/Receivables	30,528	17,941	35,716	12,705	10,188	28,023	29,259	12,644	17,047	17,064	9,297	8,158	22,440
Property & Equipment	169	602	652	683	711	770	759	720	727	748	831	855	864
Total Assets	470,526	521,538	484,633	552,555	594,115	649,423	639,574	720,801	771,229	806,395	847,948	854,484	851,209
Liabilities													
Current Accounts & Deposits **	192,046	214,428	207,464	236,659	247,140	284,781	291,134	331,601	322,936	396,724	401,097	410,124	398,178
Monetary Bills & Islamic Certificates of Deposit	129,325	164,728	145,707	164,748	195,979	205,718	200,620	213,611	264,116	226,927	240,913	240,928	255,946
Currency Issued	110,704	111,815	115,089	120,011	129,208	136,478	127,153	135,780	146,848	145,364	145,546	146,911	148,054
Other Liabilities	11,786	4,504	3,978	20,266	7,575	9,711	9,986	14,368	11,134	10,822	28,623	22,194	15,569
Total Liabilities	443,861	495,475	472,238	541,684	579,902	636,688	628,893	695,360	745,034	779,837	816,179	820,157	817,747
Capital and Reserves													
Authorized, Issued & Fully Paid Capital	20,000	20,000	20,000	20,000	20,000	20,000	20,000	20,000	20,000	20,000	20,000	20,000	20,000
General Reserve	4,603	6,056	6,139	3,655	3,655	3,655	3,655	9,542	9,542	9,542	9,542	9,542	9,542
Other Reserve	2,062	7	-13,744	-12,784	-9,442	-10,920	-12,974	-4,101	-3,347	-2,984	2,227	4,785	3,920
Retained Earnings	0	0	0	0	0	0	0	0	0	0	0	0	0
Total Capital & Reserves	26,665	26,063	12,395	10,871	14,213	12,735	10,681	25,441	26,195	26,558	31,769	34,327	33,462
Total Liabilities and Capital	470,526	521,538	484,633	552,555	594,115	649,423	639,574	720,801	771,229	806,395	847,948	854,484	851,209

* Preliminary

** Includes Banks' reserve requirement deposit with the CBUAE.

Balance Sheet - Central Bank of the UAE - Assets



Balance Sheet - Central Bank of the UAE - Liabilities and Capital

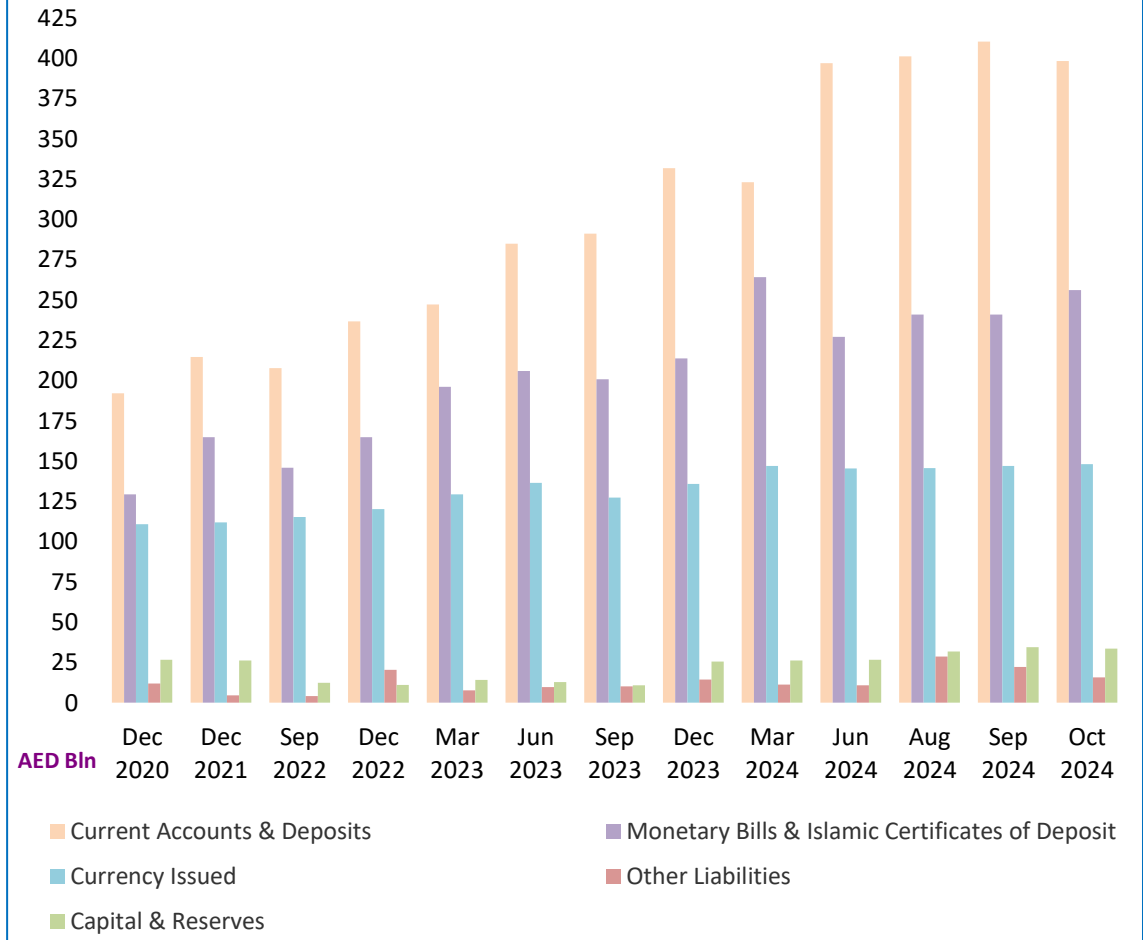


Table 6 : Central Bank International Reserves

(In Millions of AED)													
Item	Dec 2020	Dec 2021	Sep 2022	Dec 2022	Mar 2023	Jun 2023	Sep 2023	Dec 2023	Mar 2024	Jun 2024	Aug 2024	Sep 2024	Oct 2024 *
Gross International Reserves	391,857	481,528	438,117	508,402	552,244	606,870	598,348	695,887	746,218	785,003	826,763	826,856	829,830
Current Account Balances & Deposits with Banks Abroad	348,204	280,385	241,136	313,814	339,983	363,265	349,132	443,560	489,436	533,981	575,224	575,224	567,921
Foreign Investments (FVOCI & FVTPL)	4,012	135,875	119,763	134,543	150,917	165,420	169,242	187,168	185,833	179,722	186,199	186,199	181,234
IMF Reserves Position + SDR Holdings	3,802	15,081	13,818	14,526	14,871	14,755	14,510	14,734	14,600	14,382	14,752	14,845	14,534
Other Foreign Assets	35,839	50,187	63,400	45,519	46,473	63,430	65,464	50,425	56,349	56,918	50,588	50,588	66,141
Foreign Liabilities	10,812	15,388	13,596	31,513	16,796	16,913	15,376	22,466	15,535	15,234	29,887	22,252	15,007
Net International Reserves	381,045	466,140	424,521	476,889	535,448	589,957	582,972	673,421	730,683	769,769	796,876	804,604	814,823

* Preliminary

Table 7 : Aggregated Balance Sheet of Banks - Assets (All Banks)

(In Millions of AED)													
Item	Dec 2020	Dec 2021	Sep 2022	Dec 2022	Mar 2023	Jun 2023	Sep 2023	Dec 2023	Mar 2024	Jun 2024	Aug 2024	Sep 2024	Oct 2024 *
Domestic Assets													
Cash and Deposits with C.B	331,248	381,878	362,543	408,573	443,035	484,500	485,417	537,350	572,325	590,719	601,330	611,043	606,435
Cash in Hand (LCY)	15,980	17,733	17,129	18,075	17,400	20,623	17,564	18,801	19,724	18,284	19,052	18,491	20,996
Deposits with Central Bank	315,268	364,145	345,414	390,498	425,635	463,877	467,853	518,549	552,601	572,435	582,278	592,551	585,440
Due From Resident Banks	39,723	35,897	56,397	49,988	48,911	50,805	58,336	57,044	65,334	62,673	50,724	58,855	66,894
Domestic Credit and Investments	1,781,286	1,802,517	1,835,106	1,837,243	1,862,831	1,905,544	1,933,563	1,944,518	1,989,242	2,036,984	2,058,535	2,088,916	2,106,232
a) Credit Facilities	1,596,786	1,618,957	1,655,408	1,650,937	1,673,785	1,717,116	1,740,086	1,737,691	1,776,591	1,816,380	1,830,378	1,859,739	1,870,670
Claims on Private Sector	1,108,289	1,120,745	1,173,717	1,172,965	1,200,039	1,221,697	1,236,202	1,240,265	1,272,301	1,306,419	1,325,380	1,345,757	1,347,485
Commercial Bills	41,834	47,573	61,262	60,450	60,361	70,256	75,265	69,655	75,185	81,073	75,379	78,549	76,615
Loans,Advances, Overdrafts & Real Estate Mortgage loans.	1,066,455	1,073,172	1,112,455	1,112,515	1,139,678	1,151,441	1,160,937	1,170,610	1,197,116	1,225,346	1,250,001	1,267,208	1,270,870
Claims on Government	251,923	236,038	212,527	211,730	215,976	218,752	212,566	184,299	188,334	190,612	192,822	193,526	193,757
Claims on Public Sector (GREs)	219,950	245,391	255,704	253,306	245,080	264,400	280,361	292,482	297,537	302,359	295,839	303,876	313,110
Commercial Bills	5,580	8,275	5,702	5,685	5,914	7,310	7,418	6,375	8,987	8,985	8,260	8,492	8,799
Loans,Advances & Overdrafts	214,370	237,116	250,002	247,621	239,166	257,090	272,943	286,107	288,550	293,375	287,579	295,384	304,312
Claims on Other Financial Institutions	16,624	16,783	13,460	12,936	12,690	12,267	10,957	20,645	18,419	16,990	16,337	16,580	16,318
Loans,Advances & Overdrafts	16,624	16,783	13,460	12,936	12,690	12,267	10,957	20,645	18,419	16,990	16,337	16,580	16,318
b) Domestic Investments	184,500	183,560	179,698	186,306	189,046	188,428	193,477	206,827	212,651	220,604	228,157	229,177	235,562
Unclassified Assets	186,680	168,027	184,697	180,780	188,057	211,471	204,545	218,693	245,314	256,939	261,535	258,149	187,365
Fixed Assets	34,986	33,855	33,956	33,253	33,199	32,395	31,799	32,743	33,961	33,615	34,147	34,121	34,233
Inter-Branch Transactions	9,090	4,433	9,888	9,159	15,503	30,949	33,591	46,149	64,243	76,049	76,047	69,557	8,991
Other Assets	142,604	129,739	140,853	138,368	139,355	148,127	139,155	139,801	147,110	147,275	151,341	154,472	144,141
Foreign Assets	849,077	933,169	1,144,270	1,191,027	1,221,886	1,220,740	1,270,026	1,313,494	1,382,299	1,362,839	1,405,894	1,384,716	1,489,920
Due from H.O. and/or Branches Abroad	156,027	190,091	254,056	225,419	234,952	189,431	181,751	195,945	195,525	163,485	179,501	143,921	230,242
Due from Other Banks Abroad	168,193	207,637	244,376	266,827	286,574	287,395	306,266	313,651	332,191	322,363	349,790	338,577	353,985
Cash in Hand (FCY)	165	164	228	224	291	243	382	355	334	497	361	415	1,054
Securities	271,183	289,677	303,666	341,123	359,476	385,821	400,520	428,236	451,791	459,519	474,954	485,308	480,649
Credit to Non-Residents	182,313	175,095	218,047	228,499	221,999	227,559	241,385	253,655	270,308	284,533	282,591	302,140	304,119
Other Foreign Assets	71,196	70,505	123,897	128,935	118,594	130,291	139,722	121,652	132,150	132,442	118,699	114,356	119,871
Total Assets	3,188,014	3,321,488	3,583,013	3,667,611	3,764,720	3,873,060	3,951,887	4,071,099	4,254,514	4,310,154	4,378,018	4,401,679	4,456,847

* Preliminary

Table 8 : Aggregated Balance Sheet of Banks - Liabilities (All Banks)

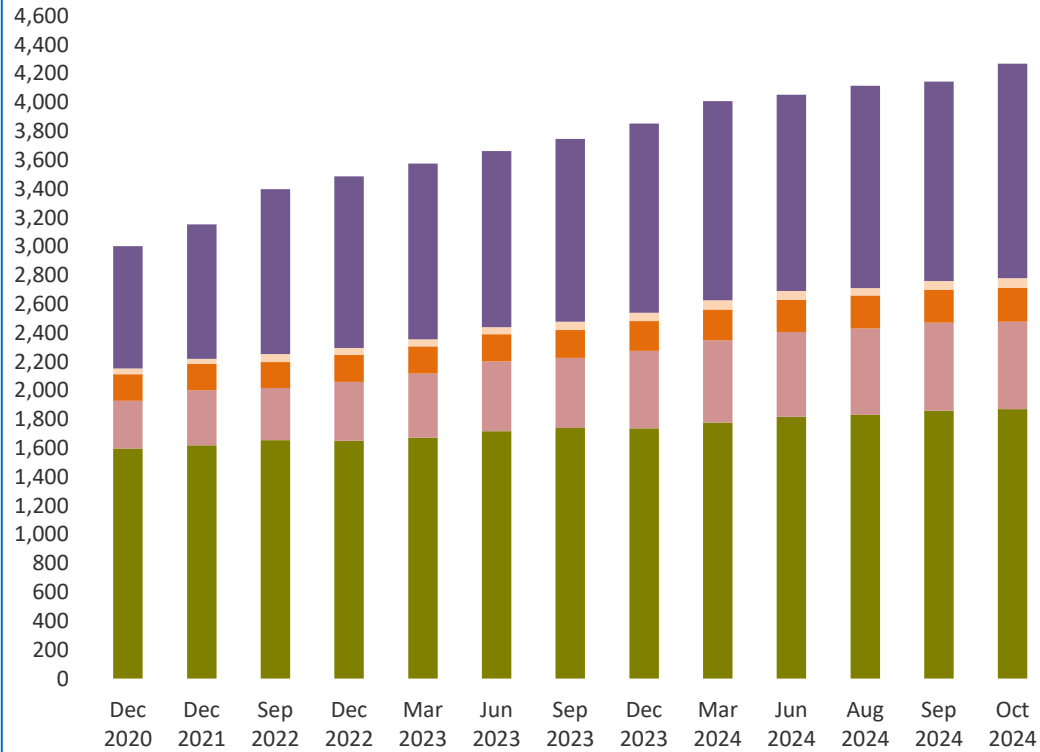
(In Millions of AED)													
Item	Dec 2020	Dec 2021	Sep 2022	Dec 2022	Mar 2023	Jun 2023	Sep 2023	Dec 2023	Mar 2024	Jun 2024	Aug 2024	Sep 2024	Oct 2024 *
Domestic Liabilities													
Monetary Deposits	505,336	607,771	624,958	635,626	647,473	668,162	685,880	712,280	750,865	757,001	761,600	767,900	782,849
Demand Deposits (LCY)	500,846	602,766	618,022	629,196	638,318	657,652	676,384	704,618	738,782	746,064	751,141	756,029	769,952
Bankers Drafts	4,490	5,005	6,936	6,430	9,155	10,510	9,496	7,662	12,083	10,937	10,459	11,871	12,897
Quasi Monetary Deposits	878,071	860,501	921,831	965,401	1,028,435	1,070,480	1,112,026	1,192,852	1,255,814	1,284,487	1,322,168	1,352,430	1,359,829
Time Deposits (LCY)	376,152	330,271	324,658	352,159	376,882	394,311	408,428	450,163	470,354	485,815	510,833	528,315	527,132
Savings Deposits (LCY)	170,720	189,843	185,622	183,652	200,292	207,609	207,709	213,096	227,609	243,442	242,944	245,777	247,988
Other Deposits (FCY)	331,199	340,387	411,551	429,590	451,261	468,560	495,889	529,593	557,851	555,230	568,391	578,338	584,709
Government Deposits (LCY + FCY)	286,471	287,408	401,182	396,055	405,642	425,143	422,845	401,129	419,328	419,435	433,283	416,536	426,098
Other Domestic Deposits (LCY + FCY) **	16,819	16,652	17,704	19,480	20,583	19,971	20,377	21,715	22,687	21,665	21,517	23,002	23,738
Capital and Reserves	392,780	402,548	413,271	428,605	430,708	447,762	464,575	489,294	476,576	495,207	511,672	519,459	522,769
Due to Central Bank	31,523	2,848	5,246	5,836	6,601	7,253	5,365	4,342	4,203	3,313	2,376	2,596	2,224
Due to Resident Banks	32,510	32,939	55,035	47,685	48,038	50,505	56,512	54,578	62,896	57,525	49,456	54,814	63,801
Capital Market Funding & Term Borrowings	26,560	26,957	26,035	28,791	28,796	26,429	26,157	25,887	29,564	27,730	31,747	31,745	31,744
Foreign Liabilities	715,606	778,461	788,708	806,943	801,993	814,389	814,939	841,296	877,415	894,703	897,217	878,489	898,642
Due to H.O and/or Branches Abroad	62,459	62,486	62,536	74,066	97,256	96,179	112,816	129,991	122,560	143,330	166,878	155,738	164,472
Due to Other Banks Abroad	133,262	167,631	177,735	184,619	172,704	188,882	189,946	186,864	205,242	197,815	183,388	179,440	184,942
Capital Market Funding	170,991	184,395	154,154	165,356	162,883	149,482	149,210	161,995	160,454	167,161	171,256	166,678	160,157
Other Term Borrowings	55,403	49,986	35,422	35,799	36,413	41,039	36,838	36,457	35,489	36,381	38,484	38,564	36,034
Other Deposits (LCY + FCY)	202,443	230,994	228,614	212,530	213,355	211,148	190,100	202,047	220,930	221,821	212,492	213,469	223,601
Other Foreign Liabilities	91,048	82,969	130,247	134,573	119,382	127,659	136,029	123,942	132,740	128,195	124,719	124,600	129,436
Unclassified Liabilities	302,338	305,403	329,043	333,189	346,451	342,966	343,211	327,726	355,166	349,088	346,981	354,708	345,153
Inter-Branch Transactions	4,174	14,013	8,849	7,635	5,249	4,891	6,930	8,117	9,929	10,325	8,025	8,975	8,632
Other Liabilities	298,164	291,390	320,194	325,554	341,202	338,075	336,281	319,609	345,237	338,763	338,956	345,733	336,520
- Of which : Provisions ¹	156,248	155,547	156,990	155,549	158,696	161,393	158,149	141,072	140,270	135,445	135,856	134,166	132,159
Total Liabilities	3,188,014	3,321,488	3,583,013	3,667,611	3,764,720	3,873,060	3,951,887	4,071,099	4,254,514	4,310,154	4,378,018	4,401,679	4,456,847

* Preliminary

** Commercial Prepayments (Margin Deposits) (L.Cy + F.Cy) & Borrowings under Repurchase Agreements

¹ Provisions for Bad and Doubtful Debts as well as Interest in suspense

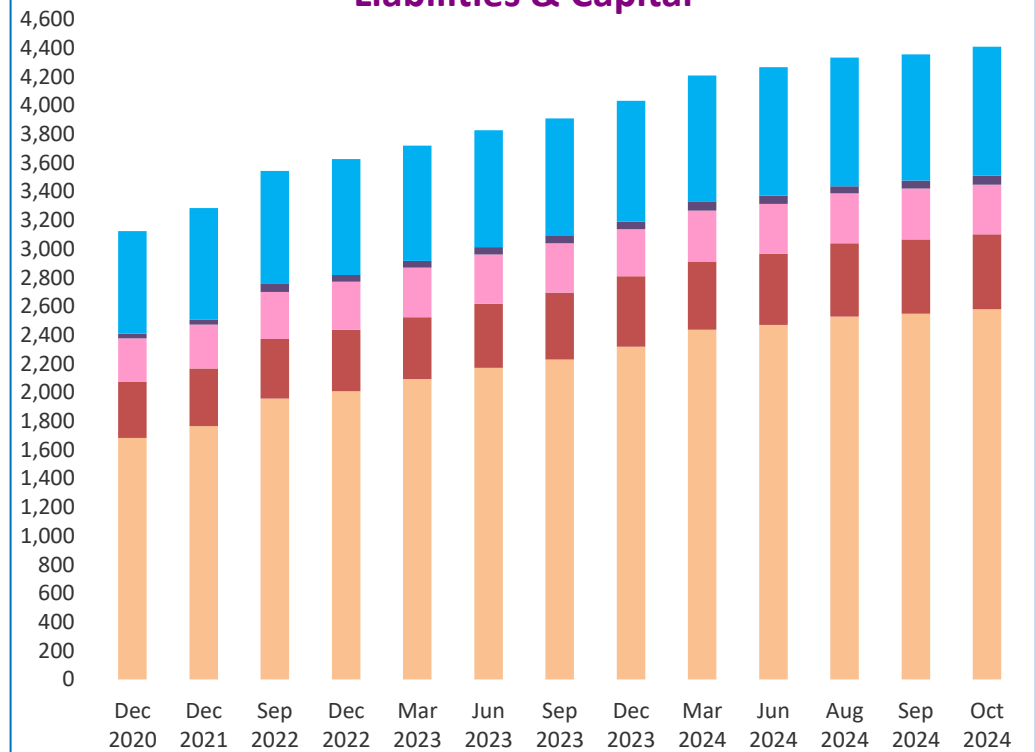
Aggregated Balance Sheet of Banks - Assets



AED Bln

- Domestic Credit
- Cash and Deposits with C.B
- Domestic Investments
- Due From Resident Banks
- Foreign Assets

Aggregated Balance Sheet of Banks - Liabilities & Capital



AED Bln

- Resident Deposits
- Capital and Reserves
- Other Liabilities
- Due to Resident Banks
- Foreign Liabilities

Table 9 : Aggregated Balance Sheet of Banks - Assets (National Banks)

(In Millions of AED)													
Item	Dec 2020	Dec 2021	Sep 2022	Dec 2022	Mar 2023	Jun 2023	Sep 2023	Dec 2023	Mar 2024	Jun 2024	Aug 2024	Sep 2024	Oct 2024 *
Domestic Assets													
Cash and Deposits with C.B	259,236	291,537	273,196	304,601	332,614	374,209	371,759	421,513	441,513	454,032	460,660	466,876	463,757
Cash in Hand (LCY)	14,591	16,296	15,460	16,439	15,740	18,406	15,928	17,011	17,861	16,762	17,536	16,976	19,624
Deposits with Central Bank	244,645	275,241	257,736	288,162	316,874	355,803	355,831	404,502	423,652	437,270	443,124	449,900	444,134
Due From Resident Banks	24,734	19,888	39,132	33,353	32,240	34,224	43,856	43,621	46,531	44,597	32,085	38,464	46,308
Domestic Credit and Investments	1,624,627	1,646,596	1,689,820	1,697,819	1,726,154	1,768,792	1,795,602	1,803,963	1,844,129	1,891,978	1,913,400	1,940,529	1,954,519
a) Credit Facilities	1,446,012	1,470,505	1,514,849	1,514,739	1,540,839	1,584,164	1,606,540	1,603,334	1,638,146	1,679,161	1,694,171	1,720,967	1,729,012
Claims on Private Sector	985,675	1,003,614	1,061,030	1,064,198	1,092,330	1,114,235	1,128,738	1,132,194	1,161,134	1,195,385	1,216,054	1,234,657	1,234,953
Commercial Bills	31,617	37,525	50,164	50,088	50,734	61,319	66,667	60,064	63,622	68,631	65,670	68,160	66,719
Loans,Advances, Overdrafts & Real Estate Mortgage loans.	954,058	966,089	1,010,866	1,014,110	1,041,596	1,052,916	1,062,071	1,072,130	1,097,512	1,126,754	1,150,384	1,166,497	1,168,233
Claims on Government	242,135	223,299	202,516	200,882	208,517	210,900	204,805	176,890	181,175	183,289	185,460	186,860	187,126
Claims on Public Sector (GREs)	203,087	229,076	239,016	237,876	228,592	247,894	263,269	274,824	278,841	284,372	277,269	283,766	291,580
Commercial Bills	5,377	8,030	5,466	5,607	5,849	6,885	7,131	6,059	8,472	8,635	7,770	8,062	7,883
Loans,Advances & Overdrafts	197,710	221,046	233,550	232,269	222,743	241,009	256,138	268,765	270,369	275,736	269,499	275,704	283,696
Claims on Other Financial Institutions	15,115	14,516	12,287	11,783	11,400	11,135	9,728	19,426	16,996	16,115	15,388	15,685	15,354
Loans,Advances & Overdrafts	15,115	14,516	12,287	11,783	11,400	11,135	9,728	19,426	16,996	16,115	15,388	15,685	15,354
b) Domestic Investments	178,615	176,091	174,971	183,080	185,315	184,628	189,062	200,629	205,983	212,817	219,229	219,562	225,507
Unclassified Assets	169,806	153,428	168,168	165,950	170,476	188,588	188,838	201,948	225,706	239,473	242,713	239,368	171,363
Fixed Assets	33,208	32,092	32,416	31,734	31,676	30,912	30,325	31,261	32,492	32,129	32,691	32,649	32,779
Inter-Branch Transactions	9,070	4,412	9,833	9,104	15,468	30,859	33,529	46,118	64,144	75,996	75,963	69,533	8,918
Other Assets	127,528	116,924	125,919	125,112	123,332	126,817	124,984	124,569	129,070	131,348	134,059	137,185	129,666
Foreign Assets	707,268	794,516	993,785	1,027,245	1,059,363	1,054,644	1,093,346	1,137,679	1,203,531	1,184,436	1,230,746	1,209,314	1,313,486
Due from H.O. and/or Branches Abroad	145,068	179,284	235,967	207,818	216,085	172,123	158,279	169,422	172,751	133,606	155,825	121,728	206,415
Due from Other Banks Abroad	120,908	155,384	196,149	210,930	226,159	225,399	238,205	245,597	254,523	255,795	280,080	268,299	283,558
Cash in Hand (FCY)	126	107	182	164	160	187	313	319	295	470	332	380	989
Securities	225,475	247,104	264,785	299,080	321,202	347,167	360,981	388,426	410,315	418,830	432,025	443,245	441,050
Credit to Non-Residents	152,350	148,946	183,876	191,753	187,120	189,270	207,062	221,111	242,343	252,362	250,998	268,258	269,098
Other Foreign Assets	63,341	63,691	112,826	117,500	108,637	120,498	128,506	112,804	123,304	123,374	111,486	107,405	112,376
Total Assets	2,785,671	2,905,965	3,164,101	3,228,968	3,320,847	3,420,457	3,493,401	3,608,724	3,761,410	3,814,517	3,879,604	3,894,550	3,949,433

* Preliminary

Table 10 : Aggregated Balance Sheet of Banks - Liabilities (National Banks)

(In Millions of AED)													
Item	Dec 2020	Dec 2021	Sep 2022	Dec 2022	Mar 2023	Jun 2023	Sep 2023	Dec 2023	Mar 2024	Jun 2024	Aug 2024	Sep 2024	Oct 2024 *
Domestic Liabilities													
Monetary Deposits	427,062	524,246	537,301	546,521	555,936	577,331	594,958	617,289	650,247	656,911	661,839	668,655	681,795
Demand Deposits (LCY)	422,994	519,861	531,203	540,948	547,739	568,551	587,092	610,483	639,552	647,017	652,342	658,075	670,434
Bankers Drafts	4,068	4,385	6,098	5,573	8,197	8,780	7,866	6,806	10,695	9,894	9,497	10,580	11,361
Quasi Monetary Deposits	762,356	746,075	797,189	827,453	884,696	922,538	961,523	1,036,872	1,090,806	1,122,675	1,150,775	1,179,067	1,181,876
Time Deposits (LCY)	344,307	303,283	299,531	321,825	340,455	354,859	364,852	405,951	421,066	438,623	461,411	474,665	474,450
Savings Deposits (LCY)	157,675	176,290	172,095	171,016	187,427	194,854	195,355	201,031	215,295	231,198	230,868	233,702	235,909
Other Deposits (FCY)	260,374	266,502	325,563	334,612	356,814	372,825	401,316	429,890	454,445	452,855	458,496	470,700	471,517
Government Deposits (LCY + FCY)	285,721	285,052	400,366	395,110	404,966	424,388	421,122	400,066	418,152	418,073	432,061	415,465	425,104
Other Domestic Deposits (LCY + FCY) **	13,594	13,275	14,372	16,150	17,337	16,722	17,376	18,785	19,625	18,350	18,402	19,593	20,373
Capital and Reserves	339,327	348,596	356,640	370,185	370,121	386,634	401,115	422,351	407,739	427,468	441,722	448,699	451,535
Due to Central Bank	30,762	2,830	5,189	5,812	6,252	7,193	5,252	4,149	3,488	3,195	2,299	2,333	2,142
Due to Resident Banks	31,669	31,700	53,734	46,086	46,835	47,795	53,554	51,994	59,781	55,145	47,551	51,878	61,914
Capital Market Funding & Term Borrowings	26,560	26,957	26,035	28,791	28,796	26,429	26,157	25,887	29,564	27,730	31,747	31,745	31,744
Foreign Liabilities	613,848	665,190	686,802	699,350	699,900	710,396	711,194	745,209	771,149	778,811	787,028	763,879	785,316
Due to H.O and/or Branches Abroad	27,683	25,604	35,838	47,395	70,856	66,436	86,524	104,292	94,726	114,438	140,097	124,960	133,667
Due to Other Banks Abroad	114,495	134,896	151,242	159,747	147,249	161,348	160,130	164,532	173,692	160,119	150,248	147,799	157,316
Capital Market Funding	165,879	181,608	152,195	163,522	161,368	148,204	148,062	160,802	159,221	166,187	170,391	165,840	159,515
Other Term Borrowings	55,006	49,538	34,944	35,320	35,934	40,958	36,713	36,332	35,364	36,287	38,358	38,439	35,908
Other Deposits (LCY + FCY)	168,895	198,345	193,010	175,263	177,449	175,663	154,200	163,649	183,463	181,222	169,711	169,425	176,899
Other Foreign Liabilities	81,890	75,199	119,573	118,103	107,044	117,787	125,565	115,602	124,683	120,559	118,223	117,417	122,011
Unclassified Liabilities	254,772	262,044	286,473	293,510	306,008	301,031	301,150	286,122	310,859	306,158	306,180	313,238	307,633
Inter-Branch Transactions	4,147	13,952	8,745	7,581	5,172	4,801	6,747	7,535	9,703	10,233	7,948	8,895	8,536
Other Liabilities	250,625	248,092	277,728	285,929	300,836	296,230	294,403	278,587	301,156	295,925	298,232	304,343	299,097
- Of which : Provisions ¹	122,568	124,486	128,399	128,887	132,636	135,687	132,835	118,020	117,158	114,734	115,194	113,435	112,348
Total Liabilities	2,785,671	2,905,965	3,164,101	3,228,968	3,320,847	3,420,457	3,493,401	3,608,724	3,761,410	3,814,517	3,879,604	3,894,550	3,949,433

* Preliminary

** Commercial Prepayments (Margin Deposits) (L.Cy + F.Cy) & Borrowings under Repurchase Agreements

¹ Provisions for Bad and Doubtful Debts as well as Interest in suspense

Table 11 : Aggregated Balance Sheet of Banks - Assets (Foreign Banks)

(In Millions of AED)													
Item	Dec 2020	Dec 2021	Sep 2022	Dec 2022	Mar 2023	Jun 2023	Sep 2023	Dec 2023	Mar 2024	Jun 2024	Aug 2024	Sep 2024	Oct 2024 *
Domestic Assets													
Cash and Deposits with C.B	72,012	90,341	89,347	103,972	110,421	110,290	113,658	115,837	130,812	136,687	140,670	144,167	142,678
Cash in Hand (LCY)	1,389	1,437	1,669	1,636	1,660	2,217	1,636	1,790	1,863	1,522	1,516	1,516	1,372
Deposits with Central Bank	70,623	88,904	87,678	102,336	108,761	108,073	112,022	114,047	128,949	135,165	139,154	142,651	141,306
Due From Resident Banks	14,989	16,009	17,265	16,635	16,671	16,581	14,480	13,423	18,803	18,075	18,639	20,391	20,587
Domestic Credit and Investments	156,659	155,921	145,286	139,424	136,677	136,753	137,961	140,555	145,113	145,006	145,135	148,387	151,712
a) Credit Facilities	150,774	148,452	140,559	136,198	132,946	132,952	133,546	134,357	138,445	137,219	136,207	138,772	141,658
Claims on Private Sector	122,614	117,131	112,687	108,767	107,709	107,462	107,464	108,071	111,167	111,034	109,326	111,100	112,532
Commercial Bills	10,217	10,048	11,098	10,362	9,627	8,937	8,598	9,591	11,563	12,443	9,709	10,389	9,896
Loans,Advances, Overdrafts & Real Estate Mortgage loans.	112,397	107,083	101,589	98,405	98,082	98,525	98,866	98,480	99,604	98,591	99,617	100,711	102,636
Claims on Government	9,788	12,739	10,011	10,848	7,459	7,852	7,761	7,409	7,159	7,323	7,362	6,666	6,632
Claims on Public Sector (GREs)	16,863	16,315	16,688	15,430	16,488	16,506	17,092	17,658	18,696	17,988	18,570	20,110	21,531
Commercial Bills	203	245	236	78	65	425	287	316	515	350	490	430	915
Loans,Advances & Overdrafts	16,660	16,070	16,452	15,352	16,423	16,081	16,805	17,342	18,181	17,638	18,080	19,680	20,615
Claims on Other Financial Institutions	1,509	2,267	1,173	1,153	1,290	1,132	1,229	1,219	1,423	875	949	896	964
Loans,Advances & Overdrafts	1,509	2,267	1,173	1,153	1,290	1,132	1,229	1,219	1,423	875	949	896	964
b) Domestic Investments	5,885	7,469	4,727	3,226	3,731	3,801	4,415	6,198	6,668	7,787	8,928	9,616	10,054
Unclassified Assets	16,874	14,599	16,529	14,830	17,581	22,883	15,707	16,745	19,608	17,465	18,822	18,782	16,003
Fixed Assets	1,778	1,763	1,540	1,519	1,523	1,483	1,474	1,482	1,469	1,486	1,456	1,471	1,454
Inter-Branch Transactions	20	21	55	55	35	90	62	31	99	53	84	24	73
Other Assets	15,076	12,815	14,934	13,256	16,023	21,310	14,171	15,232	18,040	15,927	17,282	17,286	14,476
Foreign Assets	141,809	138,653	150,485	163,782	162,523	166,096	176,680	175,815	178,768	178,403	175,148	175,402	176,434
Due from H.O. and/or Branches Abroad	10,959	10,807	18,089	17,601	18,867	17,308	23,472	26,523	22,774	29,880	23,676	22,194	23,828
Due from Other Banks Abroad	47,285	52,253	48,227	55,897	60,415	61,996	68,061	68,054	77,668	66,569	69,710	70,278	70,426
Cash in Hand (FCY)	39	57	46	60	131	56	69	36	39	27	29	35	65
Securities	45,708	42,573	38,881	42,043	38,274	38,654	39,539	39,810	41,476	40,689	42,929	42,063	39,599
Credit to Non-Residents	29,963	26,149	34,171	36,746	34,879	38,289	34,323	32,544	27,965	32,172	31,593	33,882	35,022
Other Foreign Assets	7,855	6,814	11,071	11,435	9,957	9,793	11,216	8,848	8,846	9,067	7,213	6,951	7,495
Total Assets	402,343	415,523	418,912	438,643	443,873	452,603	458,486	462,375	493,104	495,637	498,414	507,128	507,414

* Preliminary

Table 12 : Aggregated Balance Sheet of Banks - Liabilities (Foreign Banks)

(In Millions of AED)													
Item	Dec 2020	Dec 2021	Sep 2022	Dec 2022	Mar 2023	Jun 2023	Sep 2023	Dec 2023	Mar 2024	Jun 2024	Aug 2024	Sep 2024	Oct 2024 *
Domestic Liabilities													
Monetary Deposits	78,274	83,525	87,657	89,105	91,537	90,831	90,922	94,991	100,618	100,090	99,761	99,245	101,054
Demand Deposits (LCY)	77,852	82,905	86,819	88,248	90,579	89,101	89,292	94,135	99,230	99,047	98,799	97,954	99,518
Bankers Drafts	422	620	838	857	958	1,730	1,630	856	1,388	1,043	962	1,291	1,536
Quasi Monetary Deposits	115,715	114,426	124,642	137,948	143,739	147,942	150,503	155,980	165,008	161,811	171,393	173,364	177,952
Time Deposits (LCY)	31,845	26,988	25,127	30,334	36,427	39,452	43,576	44,212	49,288	47,192	49,422	53,650	52,682
Savings Deposits (LCY)	13,045	13,553	13,527	12,636	12,865	12,755	12,354	12,065	12,314	12,244	12,076	12,076	12,079
Other Deposits (FCY)	70,825	73,885	85,988	94,978	94,447	95,735	94,573	99,703	103,406	102,375	109,895	107,638	113,192
Government Deposits (LCY + FCY)	750	2,356	816	945	676	755	1,723	1,063	1,176	1,362	1,222	1,071	994
Other Domestic Deposits (LCY + FCY) **	3,225	3,377	3,332	3,330	3,246	3,249	3,001	2,930	3,062	3,315	3,115	3,409	3,365
Capital and Reserves	53,453	53,952	56,631	58,420	60,587	61,128	63,460	66,943	68,837	67,739	69,950	70,760	71,234
Due to Central Bank	761	18	57	24	349	60	113	193	715	118	77	263	83
Due to Resident Banks	841	1,239	1,301	1,599	1,203	2,710	2,958	2,584	3,115	2,380	1,905	2,936	1,887
Capital Market Funding & Term Borrowings	0	0	0	0	0	0	0	0	0	0	0	0	0
Foreign Liabilities	101,758	113,271	101,906	107,593	102,093	103,993	103,745	96,087	106,266	115,892	110,189	114,610	113,326
Due to H.O and/or Branches Abroad	34,776	36,882	26,698	26,671	26,400	29,743	26,292	25,699	27,834	28,892	26,781	30,778	30,805
Due to Other Banks Abroad	18,767	32,735	26,493	24,872	25,455	27,534	29,816	22,332	31,550	37,696	33,140	31,641	27,626
Capital Market Funding	5,112	2,787	1,959	1,834	1,515	1,278	1,148	1,193	1,233	974	865	838	641
Other Term Borrowings	397	448	478	479	479	81	125	125	125	95	126	125	125
Other Deposits (LCY + FCY)	33,548	32,649	35,604	37,267	35,906	35,485	35,900	38,398	37,467	40,600	42,781	44,044	46,702
Other Foreign Liabilities	9,158	7,770	10,674	16,470	12,338	9,872	10,464	8,340	8,057	7,636	6,496	7,183	7,426
Unclassified Liabilities	47,566	43,359	42,570	39,679	40,443	41,935	42,061	41,604	44,307	42,931	40,802	41,470	37,519
Inter-Branch Transactions	27	61	104	54	77	90	183	582	226	92	77	80	96
Other Liabilities	47,539	43,298	42,466	39,625	40,366	41,845	41,878	41,022	44,081	42,839	40,725	41,391	37,423
- Of which : Provisions ¹	33,680	31,061	28,591	26,662	26,060	25,706	25,314	23,052	23,112	20,711	20,662	20,731	19,810
Total Liabilities	402,343	415,523	418,912	438,643	443,873	452,603	458,486	462,375	493,104	495,637	498,414	507,128	507,414

* Preliminary

** Commercial Prepayments (Margin Deposits) (L.Cy + F.Cy) & Borrowings under Repurchase Agreements

¹ Provisions for Bad and Doubtful Debts as well as Interest in suspense

Table 13 : Aggregated Balance Sheet of Banks - Assets (Conventional Banks)

(In Millions of AED)													
Item	Dec 2020	Dec 2021	Sep 2022	Dec 2022	Mar 2023	Jun 2023	Sep 2023	Dec 2023	Mar 2024	Jun 2024	Aug 2024	Sep 2024	Oct 2024 *
Domestic Assets													
Cash and Deposits with C.B	252,120	307,529	306,358	334,440	357,896	399,396	399,584	453,033	480,357	505,296	514,188	525,117	519,637
Cash in Hand (LCY)	11,278	12,251	11,941	12,873	12,191	15,310	13,037	12,776	13,650	12,566	12,353	12,115	12,294
Deposits with Central Bank	240,842	295,278	294,417	321,567	345,705	384,086	386,547	440,257	466,707	492,730	501,835	513,002	507,343
Due From Resident Banks	32,359	30,133	48,938	43,107	41,228	44,308	51,021	48,873	58,054	53,307	46,118	54,199	58,795
Domestic Credit and Investments	1,373,506	1,407,069	1,421,535	1,419,925	1,438,555	1,469,862	1,487,258	1,491,335	1,527,554	1,552,428	1,561,369	1,590,316	1,604,105
a) Credit Facilities	1,236,998	1,270,066	1,293,704	1,286,434	1,304,011	1,336,210	1,351,969	1,343,925	1,378,948	1,397,525	1,399,753	1,427,345	1,435,912
Claims on Private Sector	829,243	843,753	893,279	891,722	910,476	922,266	933,703	932,619	960,477	980,933	988,421	1,006,060	1,008,145
Commercial Bills	41,834	47,573	61,262	60,450	60,361	70,256	70,674	65,149	70,130	75,665	71,061	73,944	72,190
Loans,Advances, Overdrafts & Real Estate Mortgage loans.	787,409	796,180	832,017	831,272	850,115	852,010	863,029	867,470	890,347	905,268	917,360	932,115	935,955
Claims on Government	218,595	210,615	178,664	177,028	181,276	182,733	177,346	149,573	152,885	149,555	150,956	150,485	149,858
Claims on Public Sector (GREs)	174,238	200,652	209,735	206,149	201,116	220,413	231,424	242,556	248,525	251,397	245,366	255,586	262,944
Commercial Bills	5,580	8,275	5,702	5,685	5,914	7,310	6,766	5,905	8,305	8,141	7,759	8,401	8,713
Loans,Advances & Overdrafts	168,658	192,377	204,033	200,464	195,202	213,103	224,658	236,651	240,220	243,256	237,607	247,185	254,230
Claims on Other Financial Institutions	14,922	15,046	12,026	11,535	11,143	10,798	9,496	19,177	17,061	15,640	15,010	15,214	14,966
Loans,Advances & Overdrafts	14,922	15,046	12,026	11,535	11,143	10,798	9,496	19,177	17,061	15,640	15,010	15,214	14,966
b) Domestic Investments	136,508	137,003	127,831	133,491	134,544	133,652	135,289	147,410	148,606	154,903	161,616	162,971	168,193
Unclassified Assets	151,253	139,344	154,279	150,771	159,289	182,472	174,916	190,700	216,233	226,778	231,850	228,126	157,980
Fixed Assets	30,092	28,048	28,216	27,555	27,516	26,790	26,237	25,960	27,460	26,907	27,328	27,425	27,510
Inter-Branch Transactions	9,090	4,433	9,888	9,159	15,503	30,949	33,591	46,149	64,243	76,049	76,005	69,531	8,965
Other Assets	112,071	106,863	116,175	114,057	116,270	124,733	115,088	118,591	124,530	123,822	128,517	131,170	121,504
Foreign Assets	777,606	847,091	1,047,544	1,088,639	1,117,707	1,110,058	1,147,042	1,185,287	1,243,051	1,219,238	1,261,813	1,236,163	1,336,197
Due from H.O. and/or Branches Abroad	155,295	189,509	253,437	224,757	234,373	188,610	180,256	194,451	194,405	162,540	178,515	142,725	229,086
Due from Other Banks Abroad	158,226	195,407	230,925	251,708	272,378	274,776	291,602	297,604	315,401	303,426	331,846	320,111	334,527
Cash in Hand (FCY)	149	149	211	209	275	230	369	344	316	483	349	390	1,040
Securities	243,381	251,875	258,026	289,513	302,602	319,686	332,380	355,028	370,908	374,825	390,150	399,157	392,425
Credit to Non-Residents	150,278	140,942	183,100	195,263	191,503	198,208	205,074	218,510	232,590	247,107	244,206	261,306	261,113
Other Foreign Assets	70,277	69,209	121,845	127,189	116,576	128,548	137,361	119,350	129,431	130,857	116,749	112,474	118,006
Total Assets	2,586,844	2,731,166	2,978,654	3,036,882	3,114,675	3,206,096	3,259,821	3,369,228	3,525,249	3,557,047	3,615,338	3,633,920	3,676,713

* Preliminary

Table 14 : Aggregated Balance Sheet of Banks - Liabilities (Conventional Banks)

(In Millions of AED)													
Item	Dec 2020	Dec 2021	Sep 2022	Dec 2022	Mar 2023	Jun 2023	Sep 2023	Dec 2023	Mar 2024	Jun 2024	Aug 2024	Sep 2024	Oct 2024 *
Domestic Liabilities													
Monetary Deposits	420,414	515,958	525,691	537,896	545,685	563,536	581,933	608,276	638,298	640,298	647,288	653,060	667,707
Demand Deposits (LCY)	416,973	511,921	520,028	532,594	538,116	555,257	573,744	602,092	628,239	631,431	638,759	643,110	657,112
Bankers Drafts	3,441	4,037	5,663	5,302	7,569	8,279	8,189	6,184	10,059	8,867	8,529	9,950	10,596
Quasi Monetary Deposits	654,115	627,414	694,317	724,877	774,024	804,492	836,004	913,536	961,391	989,456	1,013,767	1,042,918	1,050,136
Time Deposits (LCY)	273,121	227,361	231,237	249,847	267,586	283,164	289,817	326,065	342,453	370,003	385,964	398,794	401,061
Savings Deposits (LCY)	77,526	84,860	86,397	80,864	93,505	96,762	97,541	101,790	108,411	113,969	115,979	118,545	118,718
Other Deposits (FCY)	303,468	315,193	376,683	394,166	412,933	424,566	448,646	485,681	510,527	505,485	511,824	525,580	530,357
Government Deposits (LCY + FCY)	217,387	225,784	321,472	306,275	319,002	331,348	322,071	297,293	313,106	301,349	311,330	299,257	304,201
Other Domestic Deposits (LCY + FCY) **	13,459	14,029	15,422	16,840	18,125	17,244	17,900	19,151	19,985	19,118	18,790	19,698	20,834
Capital and Reserves	324,708	336,778	344,970	357,776	361,002	374,831	389,019	410,645	400,603	414,012	428,750	434,644	437,415
Due to Central Bank	24,463	2,609	5,180	5,779	6,499	6,071	4,980	3,925	4,078	2,395	2,262	2,501	2,170
Due to Resident Banks	22,424	27,534	36,064	29,735	28,905	32,128	31,257	31,463	40,159	39,066	35,410	38,585	42,020
Capital Market Funding & Term Borrowings	2,535	2,904	2,899	2,899	2,904	4,209	3,937	3,667	3,671	1,836	4,028	4,026	4,026
Foreign Liabilities	663,648	726,628	759,728	779,668	774,158	788,315	791,730	814,562	849,055	864,099	867,844	847,123	866,714
Due to H.O and/or Branches Abroad	61,746	62,062	61,407	72,485	94,913	94,330	109,981	126,998	119,718	140,903	164,203	152,974	162,056
Due to Other Banks Abroad	120,351	157,380	168,314	175,945	164,553	180,465	182,756	177,936	196,703	189,208	176,415	170,298	174,512
Capital Market Funding	163,651	178,891	148,648	159,849	156,376	142,974	144,537	155,486	153,946	157,898	161,993	157,415	150,894
Other Term Borrowings	55,403	49,986	35,422	35,799	36,413	41,039	36,838	36,457	33,653	34,545	36,648	36,728	34,197
Other Deposits (LCY + FCY)	172,344	196,400	217,180	202,201	203,798	203,555	182,722	194,983	213,559	214,090	205,118	206,170	216,412
Other Foreign Liabilities	90,153	81,909	128,757	133,389	118,105	125,952	134,896	122,702	131,476	127,455	123,467	123,538	128,643
Unclassified Liabilities	243,691	251,528	272,911	275,137	284,371	283,922	280,990	266,710	294,903	285,418	285,869	292,108	281,490
Inter-Branch Transactions	2,290	12,477	7,747	7,108	4,581	4,461	5,210	6,191	8,316	8,611	8,025	8,975	8,632
Other Liabilities	241,401	239,051	265,164	268,029	279,790	279,461	275,780	260,519	286,587	276,807	277,844	283,133	272,857
- Of which : Provisions ¹	132,517	132,852	133,824	132,194	134,780	137,035	133,848	117,365	117,753	112,575	113,076	111,975	109,651
Total Liabilities	2,586,844	2,731,166	2,978,654	3,036,882	3,114,675	3,206,096	3,259,821	3,369,228	3,525,249	3,557,047	3,615,338	3,633,920	3,676,713

* Preliminary

** Commercial Prepayments (Margin Deposits) (L.Cy + F.Cy) & Borrowings under Repurchase Agreements

¹ Provisions for Bad and Doubtful Debts as well as Interest in suspense

Table 15 : Aggregated Balance Sheet of Banks - Assets (Islamic Banks)

(In Millions of AED)													
Item	Dec 2020	Dec 2021	Sep 2022	Dec 2022	Mar 2023	Jun 2023	Sep 2023	Dec 2023	Mar 2024	Jun 2024	Aug 2024	Sep 2024	Oct 2024 *
Domestic Assets													
Cash and Deposits with C.B	79,128	74,349	56,185	74,133	85,139	85,104	85,833	84,317	91,968	85,423	87,142	85,926	86,799
Cash in Hand (LCY)	4,702	5,482	5,188	5,202	5,209	5,313	4,527	6,025	6,074	5,718	6,699	6,377	8,702
Deposits with Central Bank	74,426	68,867	50,997	68,931	79,930	79,791	81,306	78,292	85,894	79,705	80,443	79,549	78,097
Due From Resident Banks	7,364	5,764	7,459	6,881	7,683	6,497	7,315	8,171	7,280	9,366	4,606	4,656	8,100
Domestic Credit and Investments	407,780	395,448	413,571	417,318	424,276	435,683	446,305	453,183	461,688	484,556	497,166	498,600	502,127
a) Credit Facilities	359,788	348,891	361,704	364,503	369,774	380,906	388,117	393,766	397,643	418,855	430,625	432,394	434,758
Claims on Private Sector	279,046	276,992	280,438	281,243	289,563	299,431	302,499	307,646	311,824	325,486	336,959	339,697	339,340
Commercial Bills	0	0	0	0	0	0	4,591	4,506	5,055	5,408	4,318	4,604	4,425
Loans,Advances, Overdrafts & Real Estate Mortgage loans.	279,046	276,992	280,438	281,243	289,563	299,431	297,908	303,140	306,769	320,078	332,641	335,093	334,915
Claims on Government	33,328	25,423	33,863	34,702	34,700	36,019	35,220	34,726	35,449	41,057	41,866	43,041	43,899
Claims on Public Sector (GREs)	45,712	44,739	45,969	47,157	43,964	43,987	48,937	49,926	49,012	50,962	50,473	48,289	50,167
Commercial Bills	0	0	0	0	0	0	652	470	682	844	501	90	86
Loans,Advances & Overdrafts	45,712	44,739	45,969	47,157	43,964	43,987	48,285	49,456	48,330	50,119	49,972	48,199	50,081
Claims on Other Financial Institutions	1,702	1,737	1,434	1,401	1,547	1,469	1,461	1,468	1,358	1,350	1,327	1,367	1,352
Loans,Advances & Overdrafts	1,702	1,737	1,434	1,401	1,547	1,469	1,461	1,468	1,358	1,350	1,327	1,367	1,352
b) Domestic Investments	47,992	46,557	51,867	52,815	54,502	54,777	58,188	59,417	64,045	65,701	66,541	66,206	67,369
Unclassified Assets	35,427	28,683	30,418	30,009	28,768	28,999	29,629	27,993	29,081	30,161	29,685	30,023	29,386
Fixed Assets	4,894	5,807	5,740	5,698	5,683	5,605	5,562	6,783	6,501	6,708	6,819	6,695	6,723
Inter-Branch Transactions	0	0	0	0	0	0	0	0	0	0	42	26	26
Other Assets	30,533	22,876	24,678	24,311	23,085	23,394	24,067	21,210	22,580	23,453	22,824	23,302	22,637
Foreign Assets	71,471	86,078	96,726	102,388	104,179	110,681	122,984	128,207	139,248	143,601	144,081	148,553	153,723
Due from H.O. and/or Branches Abroad	732	582	619	662	579	821	1,495	1,494	1,120	945	986	1,196	1,156
Due from Other Banks Abroad	9,967	12,230	13,451	15,119	14,196	12,619	14,664	16,047	16,790	18,937	17,944	18,466	19,458
Cash in Hand (FCY)	16	15	17	15	16	13	13	11	18	14	12	24	14
Securities	27,802	37,802	45,640	51,610	56,874	66,134	68,140	73,208	80,883	84,694	84,804	86,151	88,224
Credit to Non-Residents	32,035	34,153	34,947	33,236	30,496	29,351	36,311	35,145	37,718	37,426	38,385	40,834	43,007
Other Foreign Assets	919	1,296	2,052	1,746	2,018	1,743	2,361	2,302	2,719	1,585	1,950	1,882	1,864
Total Assets	601,170	590,322	604,359	630,729	650,045	666,964	692,066	701,871	729,265	753,107	762,680	767,758	780,134

* Preliminary

Table 16 : Aggregated Balance Sheet of Banks - Liabilities (Islamic Banks)

(In Millions of AED)													
Item	Dec 2020	Dec 2021	Sep 2022	Dec 2022	Mar 2023	Jun 2023	Sep 2023	Dec 2023	Mar 2024	Jun 2024	Aug 2024	Sep 2024	Oct 2024 *
Domestic Liabilities													
Monetary Deposits	84,922	91,813	99,267	97,730	101,788	104,626	103,947	104,004	112,567	116,703	114,312	114,840	115,142
Demand Deposits (LCY)	83,873	90,845	97,994	96,602	100,202	102,395	102,640	102,526	110,543	114,633	112,382	112,918	112,841
Bankers Drafts	1,049	968	1,273	1,128	1,586	2,231	1,307	1,478	2,024	2,070	1,930	1,921	2,301
Quasi Monetary Deposits	223,956	233,087	227,514	240,524	254,411	265,988	276,022	279,316	294,423	295,030	308,401	309,512	309,693
Time Deposits (LCY)	103,031	102,910	93,421	102,312	109,296	111,147	118,611	124,098	127,901	115,812	124,869	129,522	126,071
Savings Deposits (LCY)	93,194	104,983	99,225	102,788	106,787	110,847	110,168	111,306	119,198	129,473	126,965	127,232	129,270
Other Deposits (FCY)	27,731	25,194	34,868	35,424	38,328	43,994	47,243	43,912	47,324	49,745	56,567	52,758	54,352
Government Deposits (LCY + FCY)	69,084	61,624	79,710	89,780	86,640	93,795	100,774	103,836	106,222	118,086	121,953	117,279	121,897
Other Domestic Deposits (LCY + FCY) **	3,360	2,623	2,282	2,640	2,458	2,727	2,477	2,564	2,702	2,548	2,727	3,305	2,904
Capital and Reserves	68,072	65,770	68,301	70,829	69,706	72,931	75,556	78,649	75,973	81,195	82,922	84,815	85,354
Due to Central Bank	7,060	239	66	57	102	1,182	385	417	125	918	114	95	54
Due to Resident Banks	10,086	5,405	18,971	17,950	19,133	18,377	25,255	23,115	22,737	18,460	14,046	16,229	21,781
Capital Market Funding & Term Borrowings	24,025	24,053	23,136	25,892	25,892	22,220	22,220	22,220	25,893	25,894	27,719	27,719	27,718
Foreign Liabilities	51,958	51,833	28,980	27,275	27,835	26,074	23,209	26,734	28,360	30,604	29,373	31,365	31,928
Due to H.O and/or Branches Abroad	713	424	1,129	1,581	2,343	1,849	2,835	2,993	2,842	2,426	2,675	2,764	2,416
Due to Other Banks Abroad	12,911	10,251	9,421	8,674	8,151	8,417	7,190	8,928	8,539	8,606	6,973	9,142	10,431
Capital Market Funding	7,340	5,504	5,506	5,507	6,507	6,508	4,673	6,509	6,508	9,263	9,263	9,263	9,263
Other Term Borrowings	0	0	0	0	0	0	0	0	1,836	1,836	1,836	1,836	1,836
Other Deposits (LCY + FCY)	30,099	34,594	11,434	10,329	9,557	7,593	7,378	7,064	7,371	7,732	7,374	7,299	7,188
Other Foreign Liabilities	895	1,060	1,490	1,184	1,277	1,707	1,133	1,240	1,264	741	1,252	1,062	793
Unclassified Liabilities	58,647	53,875	56,132	58,052	62,080	59,044	62,221	61,016	60,263	63,670	61,113	62,600	63,663
Inter-Branch Transactions	1,884	1,536	1,102	527	668	430	1,720	1,926	1,613	1,714	0	0	0
Other Liabilities	56,763	52,339	55,030	57,525	61,412	58,614	60,501	59,090	58,650	61,956	61,113	62,600	63,663
- Of which : Provisions ¹	23,731	22,695	23,166	23,355	23,916	24,358	24,301	23,707	22,517	22,870	22,780	22,191	22,507
Total Liabilities	601,170	590,322	604,359	630,729	650,045	666,964	692,066	701,871	729,265	753,107	762,680	767,758	780,134

* Preliminary

** Commercial Prepayments (Margin Deposits) (L.Cy + F.Cy) & Borrowings under Repurchase Agreements

¹ Provisions for Bad and Doubtful Debts as well as Interest in suspense

Table 17 : Aggregated Memoranda Accounts of Banks

(In Millions of AED)													
Item	Dec 2020	Dec 2021	Sep 2022	Dec 2022	Mar 2023	Jun 2023	Sep 2023	Dec 2023	Mar 2024	Jun 2024	Aug 2024	Sep 2024	Oct 2024 *
Memoranda Accounts / Off-Balance Sheet Items													
Letters of Credit	102,672	106,886	101,179	104,588	104,807	98,581	97,787	98,057	93,223	92,190	95,478	94,322	86,104
Guarantees	356,939	340,666	344,813	344,986	353,892	357,874	367,430	392,440	400,272	416,083	433,893	440,102	446,164
Commitments	245,836	230,735	263,650	293,264	293,347	292,418	307,892	330,875	347,111	339,524	362,566	364,400	369,317
FX Derivatives	680,506	549,737	617,248	643,401	613,948	762,998	605,704	611,018	653,069	734,752	653,756	685,119	760,057
Interest Rate Derivatives	3,174,285	4,256,463	3,607,557	3,340,203	3,322,280	3,742,122	3,462,774	3,374,993	3,419,301	3,316,885	3,517,667	3,599,726	3,632,056
Others Derivatives	41,857	51,080	78,727	65,621	83,135	95,753	92,717	108,989	127,557	117,819	110,017	120,289	121,978
Other Memoranda Items	9,687	24,155	17,177	19,696	14,170	14,020	14,335	13,830	16,110	19,234	16,255	27,484	17,089
Total Memoranda Accounts	4,611,782	5,559,722	5,030,351	4,811,759	4,785,579	5,363,766	4,948,639	4,930,202	5,056,643	5,036,485	5,189,632	5,331,442	5,432,765

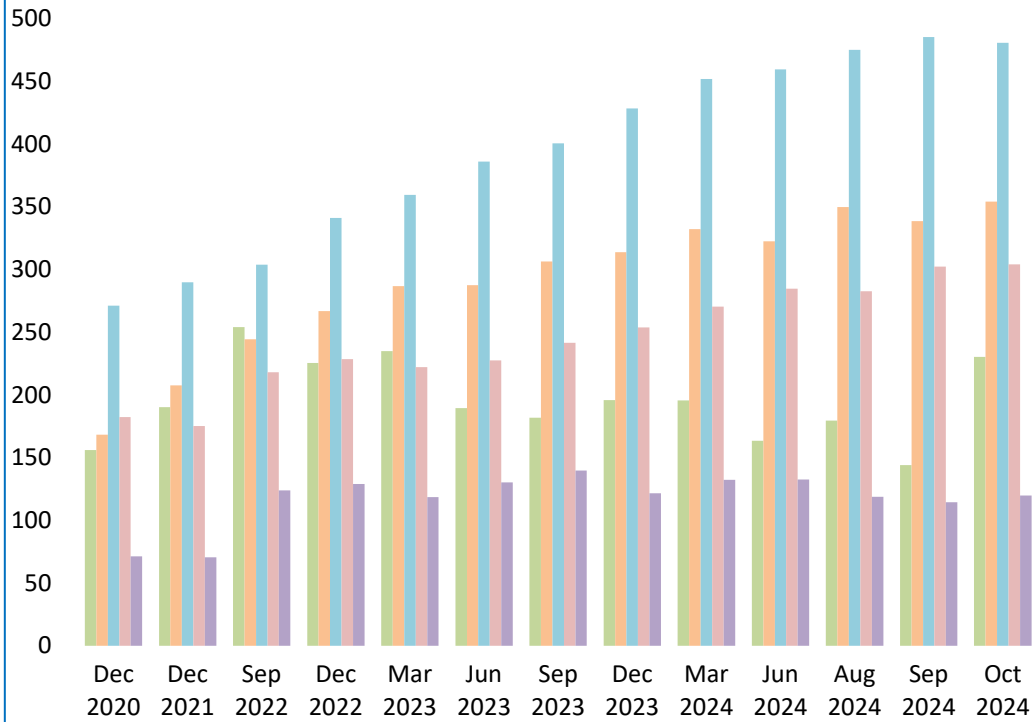
* Preliminary

Table 18 : Banks' Foreign Assets and Liabilities (All Banks)

(In Millions of AED)													
Item	Dec 2020	Dec 2021	Sep 2022	Dec 2022	Mar 2023	Jun 2023	Sep 2023	Dec 2023	Mar 2024	Jun 2024	Aug 2024	Sep 2024	Oct 2024 *
Foreign Assets	849,077	933,169	1,144,270	1,191,027	1,221,886	1,220,740	1,270,026	1,313,494	1,382,299	1,362,839	1,405,894	1,384,716	1,489,920
Notes and Coins	165	164	228	224	291	243	382	355	334	497	361	415	1,054
Due from H.O. and/or Branches Abroad	156,027	190,091	254,056	225,419	234,952	189,431	181,751	195,945	195,525	163,485	179,501	143,921	230,242
Due from Other Banks Abroad	168,193	207,637	244,376	266,827	286,574	287,395	306,266	313,651	332,191	322,363	349,790	338,577	353,985
- Money at Call & Short Notice , Nostro Balance , Banks Bills & Lending under Repurchase Agreement	102,595	118,001	136,684	153,552	144,062	146,173	168,275	174,689	168,115	161,056	171,568	165,516	173,510
- Term Placements	32,025	35,936	41,675	47,120	65,637	54,625	49,969	54,210	61,579	53,727	66,507	60,416	66,089
- Term Loans	33,573	53,700	66,017	66,155	76,875	86,597	88,022	84,752	102,497	107,581	111,716	112,645	114,387
Investments	271,183	289,677	303,666	341,123	359,476	385,821	400,520	428,236	451,791	459,519	474,954	485,308	480,649
Loans and Advances	182,313	175,095	218,047	228,499	221,999	227,559	241,385	253,655	270,308	284,533	282,591	302,140	304,119
Other Foreign Assets	71,196	70,505	123,897	128,935	118,594	130,291	139,722	121,652	132,150	132,442	118,699	114,356	119,871
Foreign Liabilities	715,606	778,461	788,708	806,943	801,993	814,389	814,939	841,296	877,415	894,703	897,217	878,489	898,642
Due to H.O and/or Branches Abroad	62,459	62,486	62,536	74,066	97,256	96,179	112,816	129,991	122,560	143,330	166,878	155,738	164,472
Due to Other Banks Abroad	133,262	167,631	177,735	184,619	172,704	188,882	189,946	186,864	205,242	197,815	183,388	179,440	184,942
- Money at Call & Short Notice , Borrowings on Demand and Remaining Balance & Borrowings Under Repurchase Agreement	74,289	100,722	112,172	113,792	112,335	123,370	127,660	117,902	128,937	128,468	112,218	111,737	121,821
- Inter Bank Borrowings	47,199	49,120	54,288	58,818	43,002	47,670	43,808	49,224	57,686	52,507	52,834	50,315	46,495
- Other Term Borrowings	11,774	17,789	11,275	12,009	17,367	17,842	18,478	19,738	18,619	16,839	18,336	17,387	16,626
Capital Market Funding	170,991	184,395	154,154	165,356	162,883	149,482	149,210	161,995	160,454	167,161	171,256	166,678	160,157
Other Term Borrowings	55,403	49,986	35,422	35,799	36,413	41,039	36,838	36,457	35,489	36,381	38,484	38,564	36,034
Other Deposits	202,443	230,994	228,614	212,530	213,355	211,148	190,100	202,047	220,930	221,821	212,492	213,469	223,601
- Demand Deposits	38,994	42,367	68,765	51,887	55,706	62,511	58,261	56,913	54,717	59,611	51,631	61,083	58,736
- Time Deposits	111,707	126,845	123,851	118,407	115,299	105,642	95,713	112,273	132,187	123,849	117,850	109,710	121,943
- Savings Deposits	18,192	19,375	20,106	20,954	21,394	21,207	20,857	22,508	21,201	20,950	21,907	20,970	21,375
- Commercial Prepayments(Margin Deposits)	660	532	598	860	865	633	843	636	770	1,099	1,015	1,215	1,303
- Borrowings Under Repurchase Agreements(NBFI)	32,890	41,875	15,294	20,422	20,091	21,155	14,426	9,717	12,055	16,313	20,089	20,491	20,244
Other Foreign Liabilities	91,048	82,969	130,247	134,573	119,382	127,659	136,029	123,942	132,740	128,195	124,719	124,600	129,436

* Preliminary

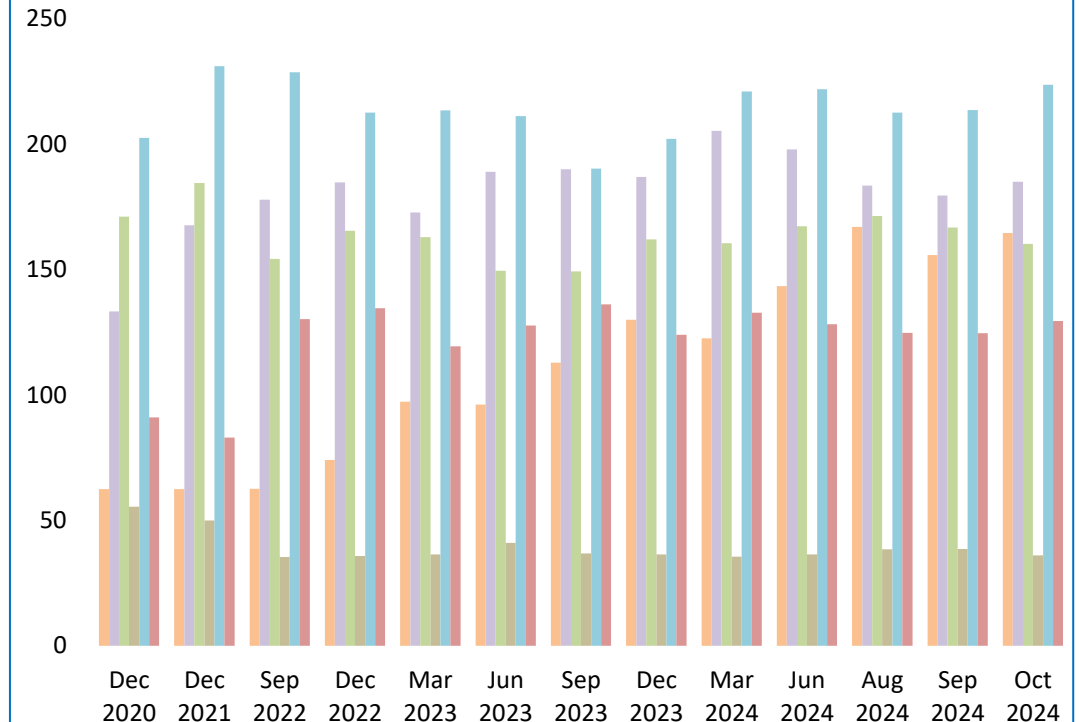
Foreign Assets of Banks



AED Bln

- Due from H.O. and/or Branches Abroad
- Investments
- Other Foreign Assets
- Due from Other Banks Abroad
- Loans and Advances

Foreign Liabilities of Banks



AED Bln

- Due to H.O and Branches
- Due to Other Banks Abroad
- Capital Market Funding
- Other Term Borrowings
- Other Deposits
- Other Foreign Liabilities

Table 19 : Banks' Foreign Assets and Liabilities (National Banks)

(In Millions of AED)													
Item	Dec 2020	Dec 2021	Sep 2022	Dec 2022	Mar 2023	Jun 2023	Sep 2023	Dec 2023	Mar 2024	Jun 2024	Aug 2024	Sep 2024	Oct 2024 *
Foreign Assets	707,268	794,516	993,785	1,027,245	1,059,363	1,054,644	1,093,346	1,137,679	1,203,531	1,184,436	1,230,746	1,209,314	1,313,486
Notes and Coins	126	107	182	164	160	187	313	319	295	470	332	380	989
Due from H.O. and/or Branches Abroad	145,068	179,284	235,967	207,818	216,085	172,123	158,279	169,422	172,751	133,606	155,825	121,728	206,415
Due from Other Banks Abroad	120,908	155,384	196,149	210,930	226,159	225,399	238,205	245,597	254,523	255,795	280,080	268,299	283,558
- Money at Call & Short Notice , Nostro Balance , Banks Bills & Lending under Repurchase Agreement	80,342	90,059	115,780	125,382	118,771	119,248	135,235	146,866	133,295	132,476	143,116	135,120	145,054
- Term Placements	11,776	21,313	24,257	30,577	43,787	33,165	28,118	30,190	36,134	33,992	46,070	40,492	45,111
- Term Loans	28,790	44,012	56,112	54,971	63,601	72,986	74,852	68,541	85,094	89,327	90,894	92,688	93,394
Investments	225,475	247,104	264,785	299,080	321,202	347,167	360,981	388,426	410,315	418,830	432,025	443,245	441,050
Loans and Advances	152,350	148,946	183,876	191,753	187,120	189,270	207,062	221,111	242,343	252,362	250,998	268,258	269,098
Other Foreign Assets	63,341	63,691	112,826	117,500	108,637	120,498	128,506	112,804	123,304	123,374	111,486	107,405	112,376
Foreign Liabilities	613,848	665,190	686,802	699,350	699,900	710,396	711,194	745,209	771,149	778,811	787,028	763,879	785,316
Due to H.O and/or Branches Abroad	27,683	25,604	35,838	47,395	70,856	66,436	86,524	104,292	94,726	114,438	140,097	124,960	133,667
Due to Other Banks Abroad	114,495	134,896	151,242	159,747	147,249	161,348	160,130	164,532	173,692	160,119	150,248	147,799	157,316
- Money at Call & Short Notice , Borrowings on Demand and Remaining Balance & Borrowings Under Repurchase Agreement	62,729	75,938	93,242	96,728	93,349	102,700	104,000	100,930	107,366	100,211	87,249	88,481	100,772
- Inter Bank Borrowings	45,326	45,846	46,742	51,058	36,577	40,839	38,045	43,871	47,713	43,069	44,669	41,937	39,943
- Other Term Borrowings	6,440	13,112	11,258	11,961	17,323	17,809	18,085	19,731	18,613	16,839	18,330	17,381	16,601
Capital Market Funding	165,879	181,608	152,195	163,522	161,368	148,204	148,062	160,802	159,221	166,187	170,391	165,840	159,515
Other Term Borrowings	55,006	49,538	34,944	35,320	35,934	40,958	36,713	36,332	35,364	36,287	38,358	38,439	35,908
Other Deposits	168,895	198,345	193,010	175,263	177,449	175,663	154,200	163,649	183,463	181,222	169,711	169,425	176,899
- Demand Deposits	23,492	23,851	49,233	31,712	37,595	46,094	41,109	37,603	35,651	41,278	32,501	42,678	35,436
- Time Deposits	98,764	118,467	113,987	107,434	103,781	93,154	82,818	99,136	119,648	107,388	100,123	89,917	104,486
- Savings Deposits	13,434	13,817	14,178	15,194	15,411	14,943	15,358	16,863	15,651	15,425	16,244	15,383	15,687
- Commercial Prepayments(Margin Deposits)	315	335	318	501	571	317	489	330	458	817	754	955	1,047
- Borrowings Under Repurchase Agreements(NBFI)	32,890	41,875	15,294	20,422	20,091	21,155	14,426	9,717	12,055	16,313	20,089	20,491	20,244
Other Foreign Liabilities	81,890	75,199	119,573	118,103	107,044	117,787	125,565	115,602	124,683	120,559	118,223	117,417	122,011

* Preliminary

Table 20 : Banks' Foreign Assets and Liabilities (Foreign Banks)

(In Millions of AED)													
Item	Dec 2020	Dec 2021	Sep 2022	Dec 2022	Mar 2023	Jun 2023	Sep 2023	Dec 2023	Mar 2024	Jun 2024	Aug 2024	Sep 2024	Oct 2024 *
Foreign Assets	141,809	138,653	150,485	163,782	162,523	166,096	176,680	175,815	178,768	178,403	175,148	175,402	176,434
Notes and Coins	39	57	46	60	131	56	69	36	39	27	29	35	65
Due from H.O. and/or Branches Abroad	10,959	10,807	18,089	17,601	18,867	17,308	23,472	26,523	22,774	29,880	23,676	22,194	23,828
Due from Other Banks Abroad	47,285	52,253	48,227	55,897	60,415	61,996	68,061	68,054	77,668	66,569	69,710	70,278	70,426
- Money at Call & Short Notice , Nostro Balance , Banks Bills & Lending under Repurchase Agreement	22,253	27,942	20,904	28,170	25,291	26,925	33,040	27,823	34,820	28,580	28,452	30,396	28,456
- Term Placements	20,249	14,623	17,418	16,543	21,850	21,460	21,851	24,020	25,445	19,735	20,437	19,924	20,978
- Term Loans	4,783	9,688	9,905	11,184	13,274	13,611	13,170	16,211	17,403	18,254	20,822	19,957	20,993
Investments	45,708	42,573	38,881	42,043	38,274	38,654	39,539	39,810	41,476	40,689	42,929	42,063	39,599
Loans and Advances	29,963	26,149	34,171	36,746	34,879	38,289	34,323	32,544	27,965	32,172	31,593	33,882	35,022
Other Foreign Assets	7,855	6,814	11,071	11,435	9,957	9,793	11,216	8,848	8,846	9,067	7,213	6,951	7,495
Foreign Liabilities	101,758	113,271	101,906	107,593	102,093	103,993	103,745	96,087	106,266	115,892	110,189	114,610	113,326
Due to H.O and/or Branches Abroad	34,776	36,882	26,698	26,671	26,400	29,743	26,292	25,699	27,834	28,892	26,781	30,778	30,805
Due to Other Banks Abroad	18,767	32,735	26,493	24,872	25,455	27,534	29,816	22,332	31,550	37,696	33,140	31,641	27,626
- Money at Call & Short Notice , Borrowings on Demand and Remaining Balance & Borrowings Under Repurchase Agreement	11,560	24,784	18,930	17,064	18,986	20,670	23,660	16,972	21,571	28,257	24,969	23,256	21,049
- Inter Bank Borrowings	1,873	3,274	7,546	7,760	6,425	6,831	5,763	5,353	9,973	9,439	8,165	8,379	6,553
- Other Term Borrowings	5,334	4,677	17	48	44	33	393	7	6	0	6	7	25
Capital Market Funding	5,112	2,787	1,959	1,834	1,515	1,278	1,148	1,193	1,233	974	865	838	641
Other Term Borrowings	397	448	478	479	479	81	125	125	125	95	126	125	125
Other Deposits	33,548	32,649	35,604	37,267	35,906	35,485	35,900	38,398	37,467	40,600	42,781	44,044	46,702
- Demand Deposits	15,502	18,516	19,532	20,175	18,111	16,417	17,152	19,310	19,066	18,332	19,130	18,404	23,301
- Time Deposits	12,943	8,378	9,864	10,973	11,518	12,488	12,895	13,137	12,539	16,461	17,727	19,793	17,457
- Savings Deposits	4,758	5,558	5,928	5,760	5,983	6,264	5,499	5,645	5,550	5,525	5,663	5,587	5,688
- Commercial Prepayments(Margin Deposits)	345	197	280	359	294	316	354	306	312	282	261	260	256
- Borrowings Under Repurchase Agreements(NBFI)	0	0	0	0	0	0	0	0	0	0	0	0	0
Other Foreign Liabilities	9,158	7,770	10,674	16,470	12,338	9,872	10,464	8,340	8,057	7,636	6,496	7,183	7,426

* Preliminary

Table 21 : Banks' Foreign Assets and Liabilities (Conventional Banks)

(In Millions of AED)													
Item	Dec 2020	Dec 2021	Sep 2022	Dec 2022	Mar 2023	Jun 2023	Sep 2023	Dec 2023	Mar 2024	Jun 2024	Aug 2024	Sep 2024	Oct 2024 *
Foreign Assets	777,606	847,091	1,047,544	1,088,639	1,117,707	1,110,058	1,147,042	1,185,287	1,243,051	1,219,238	1,261,813	1,236,163	1,336,197
Notes and Coins	149	149	211	209	275	230	369	344	316	483	349	390	1,040
Due from H.O. and/or Branches Abroad	155,295	189,509	253,437	224,757	234,373	188,610	180,256	194,451	194,405	162,540	178,515	142,725	229,086
Due from Other Banks Abroad	158,226	195,407	230,925	251,708	272,378	274,776	291,602	297,604	315,401	303,426	331,846	320,111	334,527
- Money at Call & Short Notice , Nostro Balance , Banks Bills & Lending under Repurchase Agreement	99,278	114,270	134,034	150,580	142,710	144,707	166,757	172,197	166,774	158,865	169,041	163,397	169,592
- Term Placements	28,489	33,011	38,190	42,887	60,102	50,286	45,185	50,341	56,434	48,267	61,848	54,931	62,276
- Term Loans	30,459	48,126	58,701	58,241	69,566	79,783	79,660	75,066	92,193	96,294	100,958	101,782	102,659
Investments	243,381	251,875	258,026	289,513	302,602	319,686	332,380	355,028	370,908	374,825	390,150	399,157	392,425
Loans and Advances	150,278	140,942	183,100	195,263	191,503	198,208	205,074	218,510	232,590	247,107	244,206	261,306	261,113
Other Foreign Assets	70,277	69,209	121,845	127,189	116,576	128,548	137,361	119,350	129,431	130,857	116,749	112,474	118,006
Foreign Liabilities	663,648	726,628	759,728	779,668	774,158	788,315	791,730	814,562	849,055	864,099	867,844	847,123	866,714
Due to H.O and/or Branches Abroad	61,746	62,062	61,407	72,485	94,913	94,330	109,981	126,998	119,718	140,903	164,203	152,974	162,056
Due to Other Banks Abroad	120,351	157,380	168,314	175,945	164,553	180,465	182,756	177,936	196,703	189,208	176,415	170,298	174,512
- Money at Call & Short Notice , Borrowings on Demand and Remaining Balance & Borrowings Under Repurchase Agreement	64,860	93,407	106,277	108,405	106,860	117,545	123,544	112,487	123,873	123,185	107,840	105,852	114,476
- Inter Bank Borrowings	43,717	46,184	50,762	55,532	40,326	45,078	40,734	45,711	54,211	49,184	50,239	47,059	43,409
- Other Term Borrowings	11,774	17,789	11,275	12,008	17,367	17,842	18,478	19,738	18,619	16,839	18,336	17,387	16,626
Capital Market Funding	163,651	178,891	148,648	159,849	156,376	142,974	144,537	155,486	153,946	157,898	161,993	157,415	150,894
Other Term Borrowings	55,403	49,986	35,422	35,799	36,413	41,039	36,838	36,457	33,653	34,545	36,648	36,728	34,197
Other Deposits	172,344	196,400	217,180	202,201	203,798	203,555	182,722	194,983	213,559	214,090	205,118	206,170	216,412
- Demand Deposits	37,345	40,380	66,690	50,022	53,984	61,223	56,880	55,859	53,616	58,689	50,677	60,213	57,838
- Time Deposits	104,676	120,266	120,620	115,404	111,920	103,243	93,671	110,358	129,999	120,786	114,770	106,440	118,959
- Savings Deposits	14,486	15,532	16,296	16,608	17,224	17,395	17,002	18,574	17,285	17,366	18,710	17,959	18,229
- Commercial Prepayments(Margin Deposits)	623	492	548	661	579	539	743	475	604	936	872	1,068	1,143
- Borrowings Under Repurchase Agreements(NBFI)	15,214	19,730	13,026	19,506	20,091	21,155	14,426	9,717	12,055	16,313	20,089	20,491	20,244
Other Foreign Liabilities	90,153	81,909	128,757	133,389	118,105	125,952	134,896	122,702	131,476	127,455	123,467	123,538	128,643

* Preliminary

Table 22 : Banks' Foreign Assets and Liabilities (Islamic Banks)

(In Millions of AED)													
Item	Dec 2020	Dec 2021	Sep 2022	Dec 2022	Mar 2023	Jun 2023	Sep 2023	Dec 2023	Mar 2024	Jun 2024	Aug 2024	Sep 2024	Oct 2024 *
Foreign Assets	71,471	86,078	96,726	102,388	104,179	110,681	122,984	128,207	139,248	143,601	144,081	148,553	153,723
Notes and Coins	16	15	17	15	16	13	13	11	18	14	12	24	14
Due from H.O. and/or Branches Abroad	732	582	619	662	579	821	1,495	1,494	1,120	945	986	1,196	1,156
Due from Other Banks Abroad	9,967	12,230	13,451	15,119	14,196	12,619	14,664	16,047	16,790	18,937	17,944	18,466	19,458
- Money at Call & Short Notice , Nostro Balance , Banks Bills & Lending under Repurchase Agreement	3,317	3,731	2,650	2,972	1,352	1,466	1,518	2,492	1,341	2,191	2,527	2,119	3,918
- Term Placements	3,536	2,925	3,485	4,233	5,535	4,339	4,784	3,869	5,145	5,460	4,659	5,484	3,812
- Term Loans	3,114	5,574	7,316	7,914	7,309	6,814	8,362	9,686	10,304	11,287	10,758	10,863	11,728
Investments	27,802	37,802	45,640	51,610	56,874	66,134	68,140	73,208	80,883	84,694	84,804	86,151	88,224
Loans and Advances	32,035	34,153	34,947	33,236	30,496	29,351	36,311	35,145	37,718	37,426	38,385	40,834	43,007
Other Foreign Assets	919	1,296	2,052	1,746	2,018	1,743	2,361	2,302	2,719	1,585	1,950	1,882	1,864
Foreign Liabilities	51,958	51,833	28,980	27,275	27,835	26,074	23,209	26,734	28,360	30,604	29,373	31,365	31,928
Due to H.O and/or Branches Abroad	713	424	1,129	1,581	2,343	1,849	2,835	2,993	2,842	2,426	2,675	2,764	2,416
Due to Other Banks Abroad	12,911	10,251	9,421	8,674	8,151	8,417	7,190	8,928	8,539	8,606	6,973	9,142	10,431
- Money at Call & Short Notice , Borrowings on Demand and Remaining Balance & Borrowings Under Repurchase Agreement	9,429	7,315	5,895	5,387	5,475	5,825	4,116	5,415	5,064	5,283	4,378	5,885	7,345
- Inter Bank Borrowings	3,482	2,936	3,526	3,286	2,676	2,592	3,074	3,513	3,475	3,324	2,595	3,257	3,086
- Other Term Borrowings	0	0	0	1	0	0	0	0	0	0	0	0	0
Capital Market Funding	7,340	5,504	5,506	5,507	6,507	6,508	4,673	6,509	6,508	9,263	9,263	9,263	9,263
Other Term Borrowings	0	0	0	0	0	0	0	0	1,836	1,836	1,836	1,836	1,836
Other Deposits	30,099	34,594	11,434	10,329	9,557	7,593	7,378	7,064	7,371	7,732	7,374	7,299	7,188
- Demand Deposits	1,649	1,987	2,075	1,865	1,722	1,287	1,381	1,054	1,101	921	954	870	899
- Time Deposits	7,031	6,579	3,231	3,003	3,379	2,400	2,042	1,915	2,188	3,063	3,080	3,271	2,984
- Savings Deposits	3,706	3,843	3,810	4,346	4,170	3,812	3,855	3,934	3,916	3,584	3,197	3,011	3,146
- Commercial Prepayments(Margin Deposits)	37	40	50	199	286	94	100	161	166	163	143	147	160
- Borrowings Under Repurchase Agreements(NBFI)	17,676	22,145	2,268	916	0	0	0	0	0	0	0	0	0
Other Foreign Liabilities	895	1,060	1,490	1,184	1,277	1,707	1,133	1,240	1,264	741	1,252	1,062	793

* Preliminary

Table 23 : Domestic Credit (All Banks) ¹

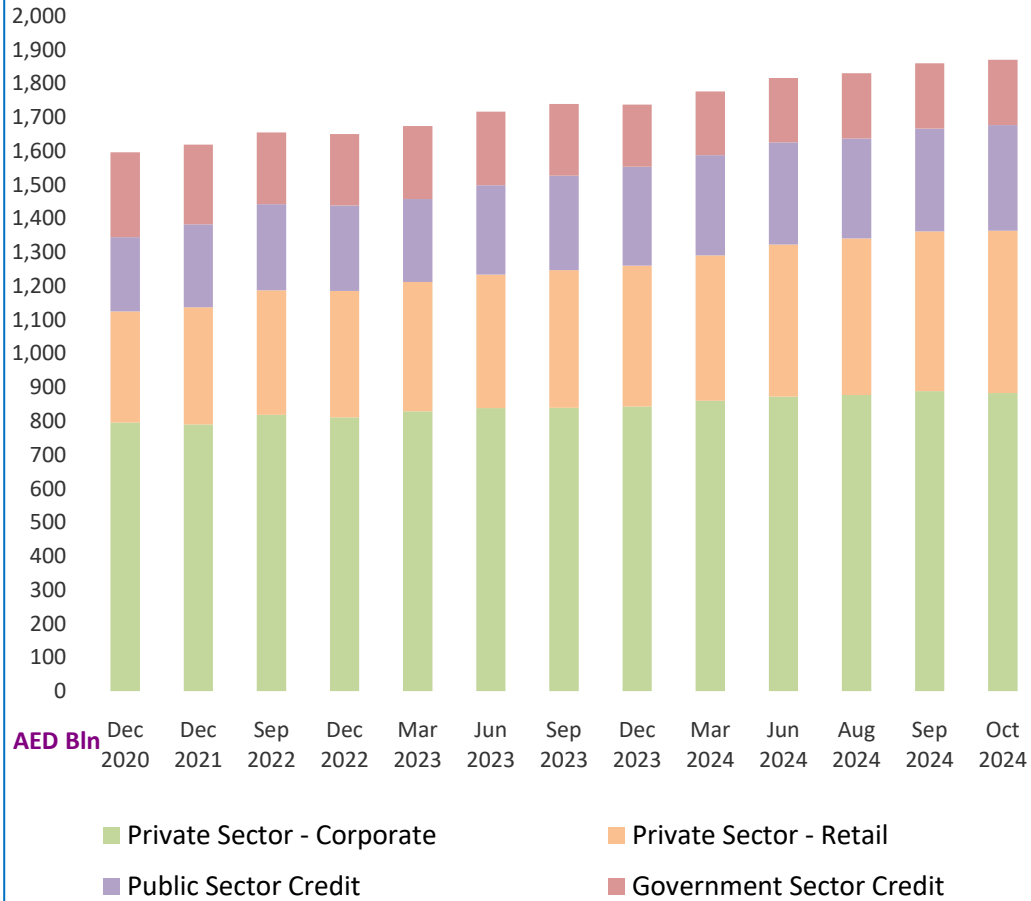
(In Millions of AED)													
Item	Dec 2020	Dec 2021	Sep 2022	Dec 2022	Mar 2023	Jun 2023	Sep 2023	Dec 2023	Mar 2024	Jun 2024	Aug 2024	Sep 2024	Oct 2024 *
Government	251,923	236,038	212,527	211,730	215,976	218,752	212,566	184,299	188,334	190,612	192,822	193,526	193,757
Public Sector (GREs)	219,950	245,391	255,704	253,306	245,080	264,400	280,361	292,482	297,537	302,359	295,839	303,876	313,110
Private Sector	1,124,913	1,137,528	1,187,177	1,185,901	1,212,729	1,233,964	1,247,159	1,260,910	1,290,720	1,323,409	1,341,717	1,362,337	1,363,803
Private - Corporate	795,439	789,914	818,574	811,125	828,614	838,150	839,021	843,076	860,149	872,687	877,337	889,059	883,550
Financial Institutions	16,624	16,783	13,460	12,936	12,690	12,267	10,957	20,645	18,419	16,990	16,337	16,580	16,318
Business and Industrial Sector **	778,815	773,131	805,114	798,189	815,924	825,883	828,064	822,431	841,730	855,698	861,000	872,479	867,232
Private - Retail	329,474	347,614	368,603	374,776	384,115	395,814	408,138	417,834	430,571	450,721	464,380	473,278	480,252
Total	1,596,786	1,618,957	1,655,408	1,650,937	1,673,785	1,717,116	1,740,086	1,737,691	1,776,591	1,816,380	1,830,378	1,859,739	1,870,670

¹ Domestic Credit Included Lending to (Residents) : Non Banking Financial Institutions , Trade Bills Discounted and Loans and Advances for Government & Public Sector , Private Sector (Corporates and Individuals) in Local and Foreign Currency

* Preliminary

** Includes Lending to Insurance Companies

Domestic Credit - Banks



Foreign Credit - Banks

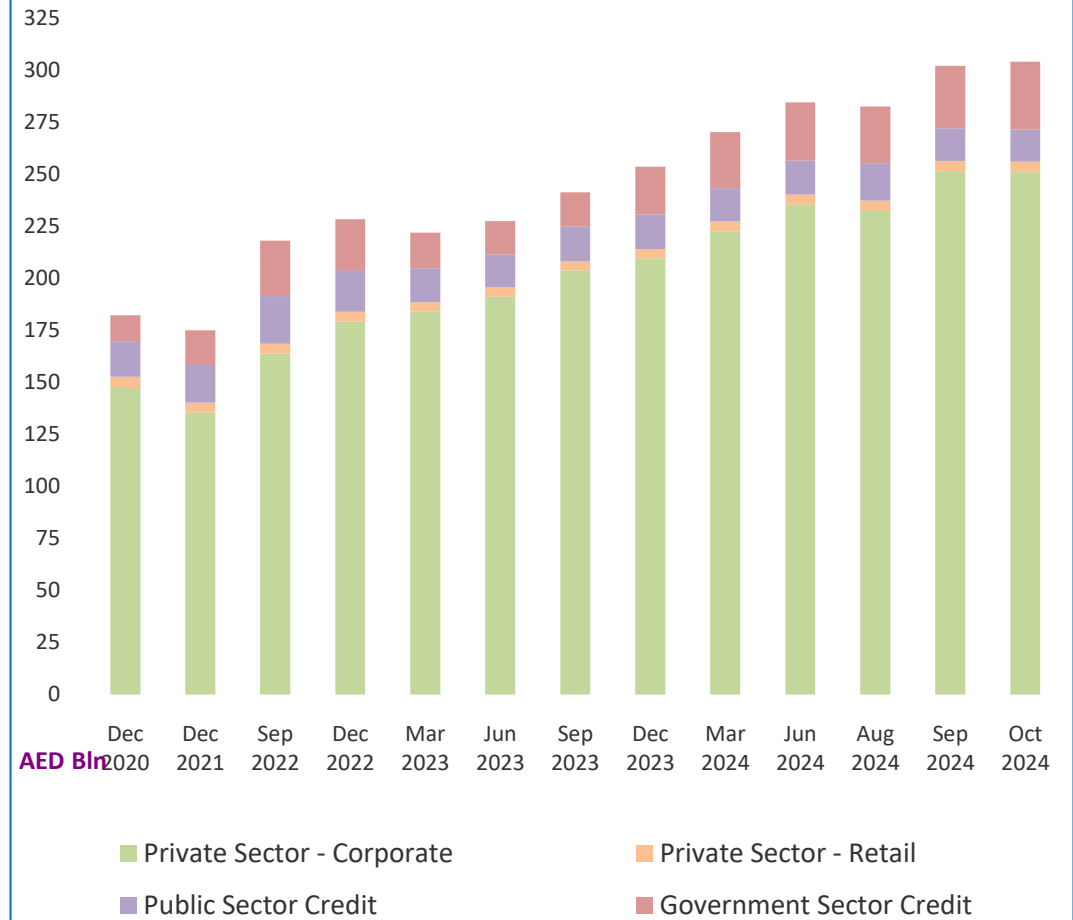


Table 24 : Domestic Credit (National Banks) ¹

(In Millions of AED)													
Item	Dec 2020	Dec 2021	Sep 2022	Dec 2022	Mar 2023	Jun 2023	Sep 2023	Dec 2023	Mar 2024	Jun 2024	Aug 2024	Sep 2024	Oct 2024 *
Government	242,135	223,299	202,516	200,882	208,517	210,900	204,805	176,890	181,175	183,289	185,460	186,860	187,126
Public Sector (GREs)	203,087	229,076	239,016	237,876	228,592	247,894	263,269	274,824	278,841	284,372	277,269	283,766	291,580
Private Sector	1,000,790	1,018,130	1,073,317	1,075,981	1,103,730	1,125,370	1,138,466	1,151,620	1,178,130	1,211,500	1,231,442	1,250,341	1,250,307
Private - Corporate	697,701	698,080	733,086	728,840	746,570	756,709	757,327	760,921	774,484	787,601	794,089	804,523	798,174
Financial Institutions	15,115	14,516	12,287	11,783	11,400	11,135	9,728	19,426	16,996	16,115	15,388	15,685	15,354
Business and Industrial Sector **	682,586	683,564	720,799	717,057	735,170	745,574	747,599	741,495	757,488	771,485	778,701	788,839	782,820
Private - Retail	303,089	320,050	340,231	347,141	357,160	368,661	381,139	390,699	403,646	423,900	437,353	445,818	452,133
Total	1,446,012	1,470,505	1,514,849	1,514,739	1,540,839	1,584,164	1,606,540	1,603,334	1,638,146	1,679,161	1,694,171	1,720,967	1,729,012

¹ Domestic Credit Included Lending to (Residents) : Non Banking Financial Institutions , Trade Bills Discounted and Loans and Advances for Government & Public Sector , Private Sector (Corporates and Individuals) in Local and Foreign Currency

* Preliminary

** Includes Lending to Insurance Companies

Table 25 : Domestic Credit (Foreign Banks) ¹

(In Millions of AED)													
Item	Dec 2020	Dec 2021	Sep 2022	Dec 2022	Mar 2023	Jun 2023	Sep 2023	Dec 2023	Mar 2024	Jun 2024	Aug 2024	Sep 2024	Oct 2024 *
Government	9,788	12,739	10,011	10,848	7,459	7,852	7,761	7,409	7,159	7,323	7,362	6,666	6,632
Public Sector (GREs)	16,863	16,315	16,688	15,430	16,488	16,506	17,092	17,658	18,696	17,988	18,570	20,110	21,531
Private Sector	124,123	119,398	113,860	109,920	108,999	108,594	108,693	109,290	112,590	111,909	110,275	111,996	113,496
Private - Corporate	97,738	91,834	85,488	82,285	82,044	81,441	81,694	82,155	85,665	85,087	83,248	84,536	85,376
Financial Institutions	1,509	2,267	1,173	1,153	1,290	1,132	1,229	1,219	1,423	875	949	896	964
Business and Industrial Sector **	96,229	89,567	84,315	81,132	80,754	80,309	80,465	80,936	84,242	84,212	82,299	83,640	84,413
Private - Retail	26,385	27,564	28,372	27,635	26,955	27,153	26,999	27,135	26,925	26,822	27,027	27,460	28,120
Total	150,774	148,452	140,559	136,198	132,946	132,952	133,546	134,357	138,445	137,219	136,207	138,772	141,658

¹ Domestic Credit Included Lending to (Residents) : Non Banking Financial Institutions , Trade Bills Discounted and Loans and Advances for Government & Public Sector , Private Sector (Corporates and Individuals) in Local and Foreign Currency

* Preliminary

** Includes Lending to Insurance Companies

Table 26 : Domestic Credit (Conventional Banks) ¹

(In Millions of AED)													
Item	Dec 2020	Dec 2021	Sep 2022	Dec 2022	Mar 2023	Jun 2023	Sep 2023	Dec 2023	Mar 2024	Jun 2024	Aug 2024	Sep 2024	Oct 2024 *
Government	218,595	210,615	178,664	177,028	181,276	182,733	177,346	149,573	152,885	149,555	150,956	150,485	149,858
Public Sector (GREs)	174,238	200,652	209,735	206,149	201,116	220,413	231,424	242,556	248,525	251,397	245,366	255,586	262,944
Private Sector	844,165	858,799	905,305	903,257	921,619	933,064	943,199	951,796	977,538	996,573	1,003,431	1,021,273	1,023,111
Private - Corporate	647,360	647,085	678,602	672,625	684,731	687,952	689,361	692,088	711,029	719,834	717,903	728,760	726,172
Financial Institutions	14,922	15,046	12,026	11,535	11,143	10,798	9,496	19,177	17,061	15,640	15,010	15,214	14,966
Business and Industrial Sector **	632,438	632,039	666,576	661,090	673,588	677,154	679,865	672,911	693,968	704,194	702,893	713,546	711,206
Private - Retail	196,805	211,714	226,703	230,632	236,888	245,112	253,838	259,708	266,509	276,739	285,528	292,513	296,939
Total	1,236,998	1,270,066	1,293,704	1,286,434	1,304,011	1,336,210	1,351,969	1,343,925	1,378,948	1,397,525	1,399,753	1,427,345	1,435,912

¹ Domestic Credit Included Lending to (Residents) : Non Banking Financial Institutions , Trade Bills Discounted and Loans and Advances for Government & Public Sector , Private Sector (Corporates and Individuals) in Local and Foreign Currency

* Preliminary

** Includes Lending to Insurance Companies

Table 27 : Domestic Credit (Islamic Banks) ¹

(In Millions of AED)													
Item	Dec 2020	Dec 2021	Sep 2022	Dec 2022	Mar 2023	Jun 2023	Sep 2023	Dec 2023	Mar 2024	Jun 2024	Aug 2024	Sep 2024	Oct 2024 *
Government	33,328	25,423	33,863	34,702	34,700	36,019	35,220	34,726	35,449	41,057	41,866	43,041	43,899
Public Sector (GREs)	45,712	44,739	45,969	47,157	43,964	43,987	48,937	49,926	49,012	50,962	50,473	48,289	50,167
Private Sector	280,748	278,729	281,872	282,644	291,110	300,900	303,960	309,114	313,182	326,836	338,286	341,064	340,692
Private - Corporate	148,079	142,829	139,972	138,500	143,883	150,198	149,660	150,988	149,120	152,853	159,434	160,299	157,378
Financial Institutions	1,702	1,737	1,434	1,401	1,547	1,469	1,461	1,468	1,358	1,350	1,327	1,367	1,352
Business and Industrial Sector **	146,377	141,092	138,538	137,099	142,336	148,729	148,199	149,520	147,762	151,504	158,107	158,932	156,026
Private - Retail	132,669	135,900	141,900	144,144	147,227	150,702	154,300	158,126	164,062	173,982	178,852	180,765	183,314
Total	359,788	348,891	361,704	364,503	369,774	380,906	388,117	393,766	397,643	418,855	430,625	432,394	434,758

¹ Domestic Credit Included Lending to (Residents) : Non Banking Financial Institutions , Trade Bills Discounted and Loans and Advances for Government & Public Sector , Private Sector (Corporates and Individuals) in Local and Foreign Currency

* Preliminary

** Includes Lending to Insurance Companies

Table 28 : Bank Credit to Residents by Economic Activity (Quarterly)

(In Millions of AED)														
		Period	Dec 2020	Dec 2021	Mar 2022	Jun 2022	Sep 2022	Dec 2022	Mar 2023	Jun 2023	Sep 2023	Dec 2023	Mar 2024	Jun 2024
Economic Activity														
1)	Agriculture	2,173	1,708	2,504	2,419	2,955	2,942	2,931	2,926	3,331	2,988	2,999	2,446	1,838
2)	Mining and Quarrying	14,940	16,405	18,497	19,490	19,617	18,654	17,716	17,458	18,818	16,609	18,492	17,363	19,185
3)	Manufacturing	73,506	82,323	83,484	87,647	86,651	84,332	83,790	84,938	82,953	89,315	93,326	93,954	94,852
	3.1 Food , Beverages and Tobacco	6,691	8,962	10,303	11,479	11,623	12,259	11,103	11,198	10,899	10,702	10,596	10,397	11,616
	3.2 Textile and Leather Products	1,271	1,186	1,306	1,362	1,322	1,236	1,312	1,440	1,339	1,430	1,553	1,690	1,506
	3.3 Furniture and Other Wood Products	2,285	2,220	2,187	2,335	2,373	2,514	2,645	2,330	2,507	2,283	2,258	2,442	2,061
	3.4 Paper And Paper Products	2,424	2,221	2,288	2,383	2,555	2,603	2,582	2,760	2,531	1,586	1,893	1,899	2,023
	3.5 Chemicals and Chemical Products, Petroleum and Petro-Chemicals	18,007	18,279	19,154	21,056	20,619	18,597	19,497	19,206	18,676	19,483	22,697	22,913	23,705
	3.6 Basic Metal Products (Including Aluminium)	17,477	17,961	17,837	18,980	17,145	16,815	16,220	16,069	15,167	14,692	15,420	15,164	16,026
	3.7 Fabricated Metal Products, Machinery and Equipment	7,215	8,615	8,547	9,131	9,899	9,522	10,621	11,316	10,982	10,048	9,931	10,649	10,160
	3.8 Other Manufactured Products	18,136	22,879	21,862	20,921	21,115	20,786	19,810	20,619	20,852	29,091	28,978	28,800	27,755
4)	Electricity, Gas and Water	27,310	28,125	38,695	38,208	41,855	43,479	42,343	52,088	50,450	50,808	51,880	53,237	51,465
5)	Construction and Real Estate	327,533	326,730	320,931	316,100	308,342	302,903	300,371	296,903	292,984	287,047	285,772	268,678	269,175
	5.1 Construction	61,812	65,973	64,819	63,406	63,226	58,504	57,242	57,704	56,275	52,908	50,030	49,519	48,964
	5.2 Real Estate	265,721	260,757	256,112	252,694	245,116	244,399	243,129	239,199	236,709	234,139	235,742	219,159	220,211
6)	Trade	138,675	131,479	136,583	140,490	140,566	136,532	142,240	145,604	145,999	154,390	162,841	168,060	169,106
	6.1 Wholesale	100,024	99,406	99,929	103,729	94,794	93,897	100,654	96,350	94,378	110,832	117,782	123,877	122,962
	6.2 Retail	38,651	32,073	36,654	36,761	45,772	42,635	41,586	49,254	51,621	43,558	45,059	44,183	46,144
7)	Transport, Storage and Communication	84,818	86,421	83,089	78,245	73,582	75,682	73,392	85,705	92,803	91,761	92,753	93,747	102,216
8)	Financial Institutions	110,357	116,770	120,687	133,313	147,428	148,347	159,358	161,298	161,855	177,753	174,900	203,761	203,724
9)	Government	240,856	222,952	214,895	210,005	200,893	200,227	203,535	208,117	203,041	174,985	183,089	185,741	188,452
10)	Personal Loans for Business Purposes ¹	104,675	99,186	106,172	97,930	91,061	92,666	96,856	95,406	92,261	88,726	87,078	87,125	89,418
11)	Personal Loans for Consumption Purposes	325,778	349,026	354,718	365,983	379,680	383,630	390,543	402,640	415,649	426,828	440,089	460,387	484,789
12)	All Others ²	146,165	157,832	158,854	169,033	162,778	161,543	160,710	164,033	179,942	176,481	183,372	181,881	185,519
Total		1,596,786	1,618,957	1,639,109	1,658,863	1,655,408	1,650,937	1,673,785	1,717,116	1,740,086	1,737,691	1,776,591	1,816,380	1,859,739

* Preliminary

¹ Including credit to High Net-Worth Individuals.

² Including Credit to the Service Sector and Non-Profit Institutions

Table 29 : Bank Credit to Non - Residents by Economic Activity (Quarterly)

(In Millions of AED)														
		Period												
		Dec 2020	Dec 2021	Mar 2022	Jun 2022	Sep 2022	Dec 2022	Mar 2023	Jun 2023	Sep 2023	Dec 2023	Mar 2024	Jun 2024	Sep 2024 *
Economic Activity														
1)	Agriculture	188	138	138	99	830	770	803	758	1,151	1,450	1,724	1,795	2,052
2)	Mining and Quarrying	18,083	14,765	17,438	16,829	18,400	22,952	21,770	20,491	21,086	20,736	19,380	16,903	15,676
3)	Manufacturing	20,772	22,942	21,874	21,221	20,366	23,516	27,080	28,951	25,110	26,751	26,497	26,818	27,563
	3.1 Food , Beverages and Tobacco	3,856	4,173	4,305	4,583	5,397	5,440	5,803	5,624	5,218	5,916	5,293	4,548	4,473
	3.2 Textile and Leather Products	505	474	409	442	426	521	1,159	1,268	1,382	1,092	1,005	1,075	1,042
	3.3 Furniture and Other Wood Products	432	421	421	400	441	499	509	528	514	479	456	33	447
	3.4 Paper And Paper Products	0	0	0	0	2	2	12	25	42	31	8	10	240
	3.5 Chemicals and Chemical Products, Petroleum and Petro-Chemicals	11,089	10,638	9,044	8,161	5,753	8,026	10,920	12,400	8,644	9,884	10,301	12,392	11,710
	3.6 Basic Metal Products (Including Aluminium)	2,405	4,043	4,217	4,240	4,055	4,086	3,980	4,176	4,478	3,980	3,321	3,519	2,874
	3.7 Fabricated Metal Products, Machinery and Equipment	1,003	1,572	1,679	1,291	1,273	1,731	2,141	2,434	2,081	1,909	2,253	1,997	2,564
	3.8 Other Manufactured Products	1,482	1,621	1,799	2,104	3,019	3,211	2,556	2,496	2,751	3,460	3,860	3,244	4,213
4)	Electricity, Gas and Water	8,185	6,969	6,757	7,276	8,789	8,908	10,504	12,624	13,995	13,643	16,752	19,212	21,114
5)	Construction and Real Estate	13,484	12,827	12,973	12,928	14,634	17,365	17,651	18,700	19,849	19,182	20,415	20,054	22,303
	5.1 Construction	4,903	3,543	3,690	4,237	4,393	4,384	4,678	4,832	5,906	5,135	5,232	5,615	6,729
	5.2 Real Estate	8,581	9,284	9,283	8,691	10,241	12,981	12,973	13,868	13,943	14,047	15,183	14,439	15,574
6)	Trade	13,308	14,926	16,134	16,013	16,755	16,124	17,660	17,894	23,125	23,808	23,521	26,844	25,066
	6.1 Wholesale	9,615	12,401	13,208	13,113	13,386	12,977	14,157	14,652	18,605	19,925	19,537	22,972	20,613
	6.2 Retail	3,693	2,525	2,926	2,900	3,369	3,147	3,503	3,242	4,520	3,883	3,984	3,872	4,453
7)	Transport, Storage and Communication	29,852	33,475	34,147	36,862	36,637	36,551	32,767	32,579	40,876	39,749	42,432	42,028	42,087
8)	Financial Institutions	44,021	31,360	35,046	39,077	49,844	55,803	55,851	54,619	56,097	58,021	62,660	72,065	84,728
9)	Government	11,573	18,107	23,916	29,579	30,100	26,764	17,771	16,344	16,721	23,074	27,591	28,331	30,940
10)	Personal Loans for Business Purposes ¹	3,722	4,715	5,018	3,970	4,759	3,844	3,902	4,937	4,583	4,242	4,334	3,987	2,394
11)	Personal Loans for Consumption Purposes	4,872	4,057	3,515	3,675	3,767	3,654	3,685	3,812	3,893	3,886	4,286	4,495	4,684
12)	All Others ²	14,253	10,814	15,786	19,637	13,166	12,248	12,555	15,660	14,899	19,113	20,716	22,004	23,537
Total		182,313	175,095	192,742	207,166	218,047	228,499	221,999	227,369	241,385	253,655	270,308	284,536	302,144

* Preliminary

¹ Including credit to High Net-Worth Individuals.² Including Credit to the Service Sector and Non-Profit Institutions

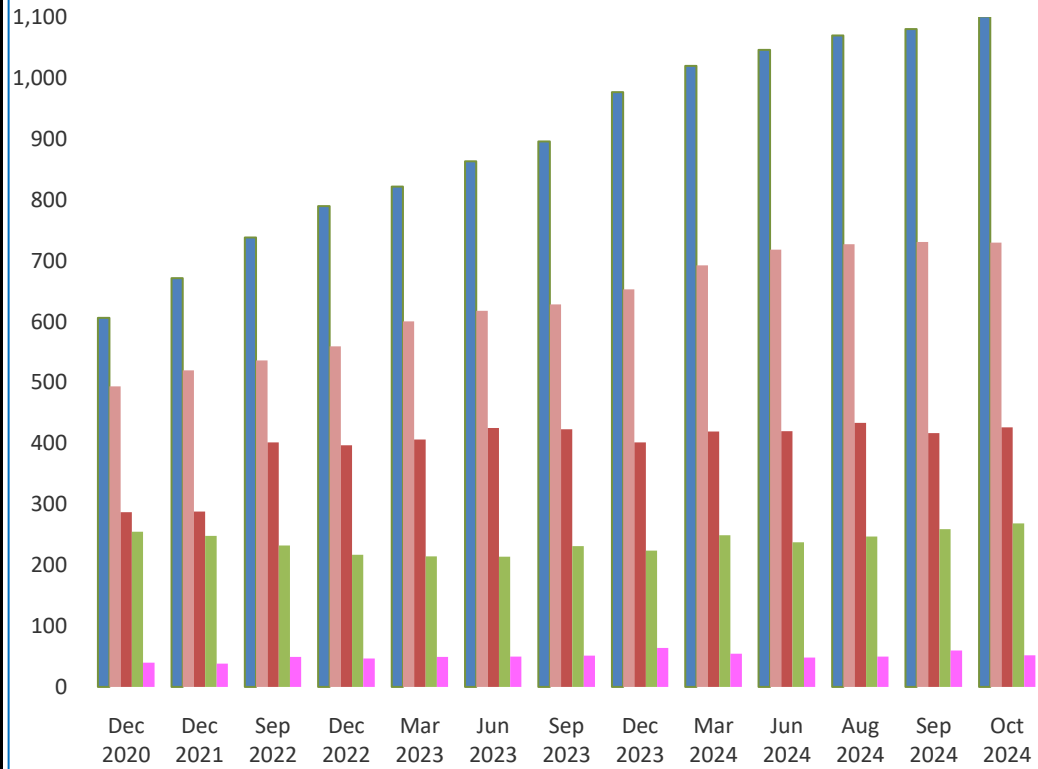
Table 30 : Deposits distributed Residents / Non Residents (All Banks) ¹

(In Millions of AED)													
Item	Dec 2020	Dec 2021	Sep 2022	Dec 2022	Mar 2023	Jun 2023	Sep 2023	Dec 2023	Mar 2024	Jun 2024	Aug 2024	Sep 2024	Oct 2024 *
Residents	1,682,102	1,765,533	1,958,348	2,009,696	2,092,554	2,170,851	2,230,771	2,319,855	2,436,348	2,470,748	2,528,008	2,547,941	2,578,921
(1) 1.1 Corporate	606,207	671,422	738,143	790,086	821,786	863,558	896,382	976,967	1,020,461	1,046,617	1,070,072	1,080,537	1,101,555
1.2 Individuals	493,901	519,917	536,581	559,456	600,694	617,997	628,424	653,122	692,674	718,393	727,179	731,169	730,137
1.3 Government	287,270	288,156	401,836	396,771	406,365	425,662	423,354	401,670	419,849	419,907	433,741	416,969	426,535
1.4 GREs	254,805	247,908	232,294	216,854	214,291	213,977	231,162	224,165	249,042	237,487	247,210	259,219	268,537
1.5 Non Banking Financial Institutions	39,919	38,130	49,494	46,529	49,418	49,657	51,449	63,931	54,322	48,344	49,806	60,047	52,157
Non-Residents	202,443	230,994	228,614	212,530	213,355	211,148	190,100	202,047	220,931	221,822	212,492	213,469	223,601
(2) 2.1 Corporate	72,250	82,170	119,744	103,101	107,722	111,929	105,083	110,387	117,576	112,306	103,790	107,308	108,040
2.2 Non Banking Financial Institutions	84,421	86,020	40,588	41,171	37,317	35,833	30,326	23,766	27,514	36,025	38,352	36,808	38,553
2.3 Individuals	24,604	26,261	31,077	33,475	35,104	37,930	37,683	38,960	39,130	40,392	42,212	42,102	42,190
2.4 Government and Non Commercial Entities	21,168	36,543	37,205	34,783	33,212	25,456	17,008	28,934	36,711	33,099	28,138	27,251	34,818
Total Deposits	1,884,545	1,996,527	2,186,962	2,222,226	2,305,909	2,381,999	2,420,871	2,521,902	2,657,279	2,692,570	2,740,500	2,761,410	2,802,522

¹ Excluding Inter-Bank Deposits and Bank Drafts but Including Commercial Prepayments & Borrowings under repurchase agreements

* Preliminary

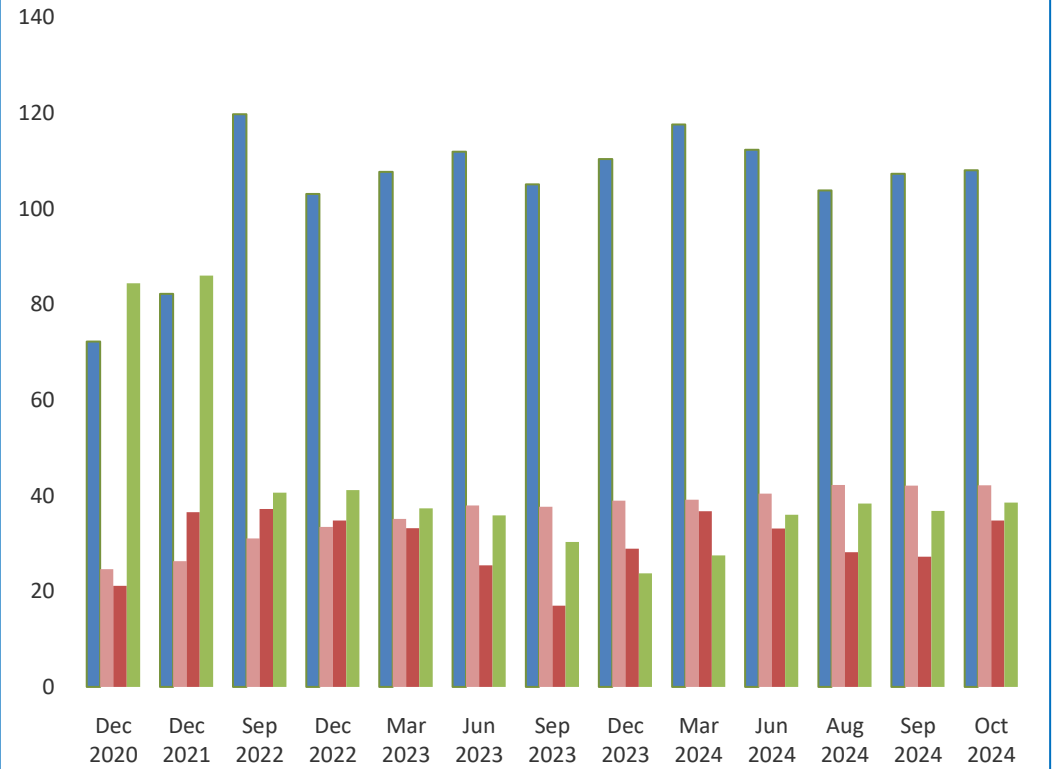
Resident Deposits - Banks



AED Bln

■ Private Corporates ■ Individuals ■ Government ■ GREs ■ NBFIs

Non - Resident Deposits - Banks



AED Bln

■ Private Corporates ■ Individuals ■ Government & GREs ■ NBFIs

Table 31 : Deposits distributed Residents / Non Residents (National Banks) ¹

(In Millions of AED)													
Item	Dec 2020	Dec 2021	Sep 2022	Dec 2022	Mar 2023	Jun 2023	Sep 2023	Dec 2023	Mar 2024	Jun 2024	Aug 2024	Sep 2024	Oct 2024 *
Residents	1,484,664	1,564,262	1,743,129	1,779,660	1,854,737	1,932,197	1,987,111	2,066,205	2,168,135	2,206,114	2,253,580	2,272,198	2,297,786
(1) 1.1 Corporate	500,263	567,688	626,537	671,325	701,240	746,648	778,728	851,023	887,329	916,423	932,203	939,281	956,097
1.2 Individuals	418,351	439,616	450,674	470,654	506,535	521,562	532,278	554,651	590,946	616,128	625,843	630,132	629,593
1.3 Government	286,520	285,800	401,019	395,826	405,690	424,906	421,630	400,606	418,672	418,545	432,519	415,897	425,540
1.4 GREs	245,125	239,011	221,103	200,491	197,480	195,220	208,650	202,925	223,514	213,223	220,185	234,036	241,986
1.5 Non Banking Financial Institutions	34,405	32,147	43,796	41,364	43,792	43,861	45,825	57,000	47,674	41,796	42,830	52,853	44,570
Non-Residents	168,895	198,345	193,010	175,263	177,449	175,663	154,200	163,648	183,463	181,222	169,711	169,425	176,900
(2) 2.1 Corporate	52,490	64,222	100,745	82,869	88,129	92,199	86,062	89,833	97,500	91,346	81,842	85,076	81,311
2.2 Non Banking Financial Institutions	79,340	81,620	35,400	36,277	33,337	33,093	26,810	20,053	23,585	32,091	33,983	32,468	34,296
2.3 Individuals	16,831	17,588	21,079	23,356	24,928	27,141	27,145	28,526	28,524	29,802	31,222	30,888	31,024
2.4 Government and Non Commercial Entities	20,234	34,915	35,786	32,761	31,055	23,230	14,183	25,236	33,854	27,984	22,664	20,994	30,269
Total Deposits	1,653,559	1,762,607	1,936,139	1,954,923	2,032,186	2,107,860	2,141,311	2,229,853	2,351,598	2,387,337	2,423,291	2,441,623	2,474,686

¹ Excluding Inter-Bank Deposits and Bank Drafts but Including Commercial Prepayments & Borrowings under repurchase agreements

* Preliminary

Table 32 : Deposits distributed Residents / Non Residents (Foreign Banks) ¹

(In Millions of AED)													
Item	Dec 2020	Dec 2021	Sep 2022	Dec 2022	Mar 2023	Jun 2023	Sep 2023	Dec 2023	Mar 2024	Jun 2024	Aug 2024	Sep 2024	Oct 2024 *
Residents	197,438	201,271	215,219	230,036	237,817	238,654	243,660	253,650	268,213	264,634	274,428	275,742	281,135
(1) 1.1 Corporate	105,944	103,734	111,606	118,761	120,546	116,910	117,654	125,944	133,132	130,195	137,869	141,256	145,458
1.2 Individuals	75,550	80,301	85,907	88,802	94,159	96,435	96,146	98,471	101,728	102,264	101,336	101,037	100,544
1.3 Government	750	2,356	817	945	675	756	1,724	1,064	1,177	1,363	1,222	1,072	995
1.4 GREs	9,680	8,897	11,191	16,363	16,811	18,757	22,512	21,240	25,528	24,264	27,025	25,183	26,551
1.5 Non Banking Financial Institutions	5,514	5,983	5,698	5,165	5,626	5,796	5,624	6,931	6,648	6,548	6,976	7,194	7,587
Non-Residents	33,548	32,649	35,604	37,267	35,906	35,485	35,900	38,399	37,468	40,599	42,781	44,044	46,702
(2) 2.1 Corporate	19,760	17,948	18,999	20,232	19,593	19,730	19,021	20,554	20,076	20,960	21,948	22,232	26,729
2.2 Non Banking Financial Institutions	5,081	4,400	5,188	4,894	3,980	2,740	3,516	3,713	3,929	3,934	4,369	4,340	4,257
2.3 Individuals	7,773	8,673	9,998	10,119	10,176	10,789	10,538	10,434	10,606	10,590	10,990	11,214	11,167
2.4 Government and Non Commercial Entities	934	1,628	1,419	2,022	2,157	2,226	2,825	3,698	2,857	5,115	5,474	6,258	4,549
Total Deposits	230,986	233,920	250,823	267,303	273,723	274,139	279,560	292,049	305,681	305,233	317,209	319,787	327,837

¹ Excluding Inter-Bank Deposits and Bank Drafts but Including Commercial Prepayments & Borrowings under repurchase agreements

* Preliminary

Table 33 : Deposits distributed Residents / Non Residents (Conventional Banks) ¹

(In Millions of AED)													
Item	Dec 2020	Dec 2021	Sep 2022	Dec 2022	Mar 2023	Jun 2023	Sep 2023	Dec 2023	Mar 2024	Jun 2024	Aug 2024	Sep 2024	Oct 2024 *
Residents	1,301,830	1,377,356	1,550,846	1,580,152	1,648,844	1,705,946	1,748,859	1,831,614	1,922,458	1,940,451	1,982,544	2,004,926	2,031,587
(1) 1.1 Corporate	511,722	566,082	623,761	670,081	691,011	727,082	754,757	830,919	861,159	885,025	902,109	908,305	927,135
1.2 Individuals	336,455	358,259	372,628	392,270	425,339	436,159	443,118	461,264	492,969	513,051	525,267	527,646	528,611
1.3 Government	218,158	226,476	322,075	306,922	319,615	331,819	322,532	297,820	313,614	301,813	311,771	299,682	304,623
1.4 GREs	205,713	195,641	188,299	170,507	169,424	167,186	182,930	185,238	208,009	199,301	200,028	216,241	226,603
1.5 Non Banking Financial Institutions	29,782	30,898	44,083	40,372	43,455	43,700	45,522	56,373	46,707	41,261	43,369	53,052	44,616
Non-Residents	172,344	196,400	217,180	202,201	203,798	203,555	182,722	194,983	213,562	214,089	205,118	206,170	216,412
(2) 2.1 Corporate	68,546	78,278	116,137	98,753	103,993	109,005	101,982	107,575	114,484	109,695	101,505	105,155	105,983
2.2 Non Banking Financial Institutions	61,502	59,395	36,619	39,187	36,419	35,170	30,078	23,173	27,076	35,616	37,890	36,338	38,076
2.3 Individuals	21,243	22,976	27,483	29,846	31,085	34,010	33,776	35,348	35,422	36,841	38,751	38,565	38,695
2.4 Government and Non Commercial Entities	21,053	35,751	36,941	34,415	32,301	25,370	16,886	28,887	36,580	31,937	26,972	26,112	33,659
Total Deposits	1,474,174	1,573,756	1,768,026	1,782,353	1,852,642	1,909,501	1,931,581	2,026,597	2,136,020	2,154,540	2,187,662	2,211,096	2,247,999

¹ Excluding Inter-Bank Deposits and Bank Drafts but Including Commercial Prepayments & Borrowings under repurchase agreements

* Preliminary

Table 34 : Deposits distributed Residents / Non Residents (Islamic Banks) ¹

(In Millions of AED)													
Item	Dec 2020	Dec 2021	Sep 2022	Dec 2022	Mar 2023	Jun 2023	Sep 2023	Dec 2023	Mar 2024	Jun 2024	Aug 2024	Sep 2024	Oct 2024 *
Residents	380,272	388,177	407,502	429,544	443,710	464,905	481,912	488,241	513,890	530,297	545,464	543,015	547,334
(1) 1.1 Corporate	94,485	105,340	114,382	120,005	130,775	136,476	141,625	146,048	159,302	161,592	167,963	172,232	174,420
1.2 Individuals	157,446	161,658	163,953	167,186	175,355	181,838	185,306	191,858	199,705	205,342	201,912	203,523	201,527
1.3 Government	69,112	61,680	79,761	89,849	86,750	93,843	100,822	103,850	106,235	118,094	121,970	117,287	121,913
1.4 GREs	49,092	52,267	43,995	46,347	44,867	46,791	48,232	38,927	41,033	38,186	47,182	42,978	41,934
1.5 Non Banking Financial Institutions	10,137	7,232	5,411	6,157	5,963	5,957	5,927	7,558	7,615	7,083	6,437	6,995	7,541
Non-Residents	30,099	34,594	11,434	10,329	9,557	7,593	7,378	7,064	7,369	7,733	7,374	7,299	7,188
(2) 2.1 Corporate	3,704	3,892	3,607	4,348	3,729	2,924	3,101	2,812	3,092	2,611	2,285	2,153	2,058
2.2 Non Banking Financial Institutions	22,919	26,625	3,969	1,984	898	663	248	593	438	409	462	470	477
2.3 Individuals	3,361	3,285	3,594	3,629	4,019	3,920	3,907	3,612	3,708	3,551	3,461	3,537	3,495
2.4 Government and Non Commercial Entities	115	792	264	368	911	86	122	47	131	1,162	1,166	1,139	1,158
Total Deposits	410,371	422,771	418,936	439,873	453,267	472,498	489,290	495,305	521,259	538,030	552,838	550,314	554,523

¹ Excluding Inter-Bank Deposits and Bank Drafts but Including Commercial Prepayments & Borrowings under repurchase agreements

* Preliminary

Table 35 : Classification of Deposits by Size (Quarterly) ¹

(In Millions of AED)													
Deposit Size	Dec 2020	Dec 2021	Mar 2022	Jun 2022	Sep 2022	Dec 2022	Mar 2023	Jun 2023	Sep 2023	Dec 2023	Mar 2024	Jun 2024	Sep 2024 *
0 to AED 250,000	142,345	144,478	146,918	148,474	154,419	160,892	170,461	176,364	183,965	198,816	197,642	205,787	209,981
AED 250,001 to AED 500,000	73,158	87,428	90,639	83,337	87,443	84,258	90,953	95,417	98,248	103,249	107,141	110,124	111,684
AED 500,001 to AED 1,000,000	91,536	95,617	97,519	110,318	103,139	108,517	116,265	121,440	124,196	128,115	135,167	138,856	141,131
AED 1,000,001 to AED 5,000,000	238,289	250,630	258,401	251,778	272,017	288,733	305,479	316,942	325,739	353,112	353,078	365,499	374,387
AED 5 Million to AED 20 Million	229,206	242,462	248,581	250,794	246,014	269,238	282,728	288,328	298,721	309,269	326,935	334,032	343,243
Above AED 20 Million	1,110,011	1,175,912	1,164,179	1,247,132	1,323,931	1,310,588	1,340,023	1,383,508	1,390,002	1,429,341	1,537,317	1,538,271	1,580,983
Total Deposits	1,884,545	1,996,527	2,006,237	2,091,833	2,186,963	2,222,226	2,305,909	2,381,999	2,420,871	2,521,902	2,657,280	2,692,570	2,761,409

¹ Excluding Inter-Bank Deposits and Bank Drafts but Including Commercial Prepayments & Borrowings under repurchase agreements

* Preliminary

Table 36 : Deposits by Type and Currency (All Banks)¹

(In Millions of AED)													
Item	Dec 2020	Dec 2021	Sep 2022	Dec 2022	Mar 2023	Jun 2023	Sep 2023	Dec 2023	Mar 2024	Jun 2024	Aug 2024	Sep 2024	Oct 2024 *
Demand	696,884	848,040	923,963	907,451	918,955	955,430	981,451	1,019,471	1,056,997	1,058,043	1,050,329	1,083,948	1,078,367
Local Currency	513,144	614,109	639,938	646,030	659,642	676,421	693,721	724,856	757,785	768,383	767,089	781,528	789,358
Foreign Currencies	183,740	233,931	284,025	261,421	259,313	279,009	287,730	294,615	299,212	289,660	283,240	302,421	289,010
Savings	215,208	241,819	244,332	245,868	263,141	268,621	266,453	272,825	286,665	302,014	303,714	304,534	308,239
Local Currency	180,484	200,488	196,460	194,610	211,623	219,174	218,674	224,035	238,744	254,617	253,937	256,615	259,082
Foreign Currencies	34,724	41,331	47,872	51,258	51,518	49,447	47,779	48,790	47,921	47,397	49,777	47,919	49,157
Time	616,591	533,565	563,875	613,015	659,630	678,838	702,560	780,941	840,098	850,076	886,661	888,473	926,921
Local Currency	389,317	342,447	335,481	363,057	387,568	404,470	419,419	461,145	483,008	498,494	524,730	542,596	541,316
Foreign Currencies	227,274	191,118	228,394	249,958	272,062	274,368	283,141	319,796	357,090	351,582	361,931	345,877	385,605
Total Deposits **	1,528,683	1,623,424	1,732,170	1,766,334	1,841,726	1,902,889	1,950,464	2,073,237	2,183,760	2,210,133	2,240,704	2,276,955	2,313,527
Total Local Currency	1,082,945	1,157,044	1,171,879	1,203,697	1,258,833	1,300,065	1,331,814	1,410,036	1,479,537	1,521,495	1,545,756	1,580,738	1,589,755
Total Foreign Currencies	445,738	466,380	560,291	562,637	582,893	602,824	618,650	663,201	704,223	688,639	694,948	696,217	723,772
Commercial Prepayments	17,284	17,122	18,121	19,066	20,174	19,004	19,474	20,591	21,697	21,150	21,062	22,747	23,571

¹ Excluding Inter-Bank Deposits

* Preliminary

** Residents and Non-Residents (Excluding Government Deposits, Commercial Prepayments and Borrowings under Repurchase Agreements)

Table 37 : Deposits by Type and Currency (National Banks) ¹

(In Millions of AED)													
Item	Dec 2020	Dec 2021	Sep 2022	Dec 2022	Mar 2023	Jun 2023	Sep 2023	Dec 2023	Mar 2024	Jun 2024	Aug 2024	Sep 2024	Oct 2024 *
Demand	561,771	702,302	764,776	742,935	759,924	804,846	829,177	853,184	884,324	888,534	876,773	913,749	902,572
Local Currency	430,610	525,103	545,990	551,472	563,138	581,986	598,343	624,616	651,758	662,993	662,231	677,148	681,403
Foreign Currencies	131,161	177,199	218,786	191,463	196,786	222,860	230,834	228,568	232,566	225,541	214,542	236,601	221,169
Savings	189,229	212,095	212,719	215,328	232,637	238,342	237,865	244,746	258,138	274,094	275,801	276,742	280,656
Local Currency	165,239	184,383	180,023	179,178	195,690	203,183	203,577	209,284	223,837	239,798	239,284	242,003	244,466
Foreign Currencies	23,990	27,712	32,696	36,150	36,947	35,159	34,288	35,462	34,301	34,296	36,517	34,739	36,189
Time	551,770	482,364	509,589	547,235	581,207	591,292	610,881	689,391	741,444	751,251	779,789	775,942	810,217
Local Currency	355,065	313,381	307,366	329,286	348,162	361,961	372,698	413,602	430,254	447,577	471,586	484,947	484,762
Foreign Currencies	196,705	168,983	202,223	217,949	233,045	229,331	238,183	275,789	311,190	303,674	308,203	290,995	325,456
Total Deposits **	1,302,770	1,396,761	1,487,084	1,505,498	1,573,768	1,634,480	1,677,923	1,787,321	1,883,906	1,913,878	1,932,363	1,966,433	1,993,445
Total Local Currency	950,914	1,022,867	1,033,379	1,059,936	1,106,990	1,147,130	1,174,618	1,247,502	1,305,849	1,350,368	1,373,101	1,404,098	1,410,631
Total Foreign Currencies	351,856	373,894	453,705	445,562	466,778	487,350	503,305	539,819	578,057	563,510	559,262	562,335	582,814
Commercial Prepayments	13,714	13,548	14,509	15,377	16,634	15,439	16,119	17,355	18,323	17,552	17,686	19,078	19,950

¹ Excluding Inter-Bank Deposits

* Preliminary

** Residents and Non-Residents (Excluding Government Deposits, Commercial Prepayments and Borrowings under Repurchase Agreements)

Table 38 : Deposits by Type and Currency (Foreign Banks) ¹

(In Millions of AED)													
Item	Dec 2020	Dec 2021	Sep 2022	Dec 2022	Mar 2023	Jun 2023	Sep 2023	Dec 2023	Mar 2024	Jun 2024	Aug 2024	Sep 2024	Oct 2024 *
Demand	135,113	145,738	159,187	164,516	159,031	150,584	152,274	166,287	172,673	169,510	173,556	170,199	175,795
Local Currency	82,534	89,006	93,948	94,558	96,504	94,435	95,378	100,240	106,027	105,391	104,858	104,380	107,954
Foreign Currencies	52,579	56,732	65,239	69,958	62,527	56,149	56,896	66,047	66,646	64,119	68,698	65,819	67,841
Savings	25,979	29,724	31,613	30,540	30,504	30,279	28,588	28,079	28,527	27,920	27,913	27,792	27,583
Local Currency	15,245	16,105	16,437	15,432	15,933	15,991	15,097	14,751	14,907	14,819	14,653	14,611	14,615
Foreign Currencies	10,734	13,619	15,176	15,108	14,571	14,288	13,491	13,328	13,620	13,101	13,260	13,181	12,968
Time	64,821	51,201	54,286	65,780	78,423	87,546	91,679	91,550	98,654	98,825	106,872	112,530	116,704
Local Currency	34,252	29,066	28,115	33,771	39,406	42,509	46,721	47,543	52,754	50,917	53,144	57,649	56,554
Foreign Currencies	30,569	22,135	26,171	32,009	39,017	45,037	44,958	44,007	45,900	47,908	53,728	54,882	60,149
Total Deposits **	225,913	226,663	245,086	260,836	267,958	268,409	272,541	285,916	299,854	296,255	308,341	310,522	320,082
Total Local Currency	132,031	134,177	138,500	143,761	151,843	152,935	157,196	162,534	173,688	171,127	172,655	176,640	179,124
Total Foreign Currencies	93,882	92,486	106,586	117,075	116,115	115,474	115,345	123,382	126,166	125,129	135,686	133,881	140,958
Commercial Prepayments	3,570	3,574	3,612	3,689	3,540	3,565	3,355	3,236	3,374	3,598	3,376	3,669	3,621

¹ Excluding Inter-Bank Deposits

* Preliminary

** Residents and Non-Residents (Excluding Government Deposits, Commercial Prepayments and Borrowings under Repurchase Agreements)

Table 39 : Deposits by Type and Currency (Conventional Banks) ¹

(In Millions of AED)													
Item	Dec 2020	Dec 2021	Sep 2022	Dec 2022	Mar 2023	Jun 2023	Sep 2023	Dec 2023	Mar 2024	Jun 2024	Aug 2024	Sep 2024	Oct 2024 *
Demand	600,087	742,300	808,847	793,753	801,618	834,836	860,233	900,593	928,556	926,224	920,311	953,222	948,840
Local Currency	428,516	522,385	540,904	548,381	558,428	573,185	590,101	621,513	646,410	653,088	654,029	667,929	675,834
Foreign Currencies	171,571	219,915	267,943	245,372	243,190	261,651	270,132	279,080	282,146	273,137	266,282	285,293	273,006
Savings	111,824	127,395	134,935	131,953	145,783	147,547	146,367	151,932	157,814	163,160	167,472	168,698	169,264
Local Currency	85,338	93,150	94,965	89,441	102,215	105,932	106,196	110,341	117,133	122,721	124,918	127,470	127,694
Foreign Currencies	26,486	34,245	39,970	42,512	43,568	41,615	40,171	41,591	40,681	40,439	42,554	41,229	41,570
Time	496,631	418,082	453,856	494,575	531,288	544,645	557,983	631,997	685,286	704,660	726,033	726,551	766,980
Local Currency	284,997	238,212	240,840	259,498	276,993	291,971	299,256	335,851	353,693	381,208	398,323	411,477	413,768
Foreign Currencies	211,634	179,870	213,016	235,077	254,295	252,674	258,727	296,146	331,593	323,452	327,710	315,074	353,212
Total Deposits **	1,208,542	1,287,777	1,397,638	1,420,281	1,478,689	1,527,028	1,564,583	1,684,522	1,771,656	1,794,044	1,813,816	1,848,471	1,885,084
Total Local Currency	798,851	853,747	876,709	897,320	937,636	971,088	995,553	1,067,705	1,117,236	1,157,017	1,177,270	1,206,875	1,217,296
Total Foreign Currencies	409,691	434,030	520,929	522,961	541,053	555,940	569,030	616,817	654,420	637,027	636,546	641,596	667,789
Commercial Prepayments	14,082	14,521	15,789	16,227	17,430	16,183	16,897	17,866	18,829	18,439	18,192	19,295	20,507

¹ Excluding Inter-Bank Deposits

* Preliminary

** Residents and Non-Residents (Excluding Government Deposits, Commercial Prepayments and Borrowings under Repurchase Agreements)

Table 40 : Deposits by Type and Currency (Islamic Banks)¹

(In Millions of AED)													
Item	Dec 2020	Dec 2021	Sep 2022	Dec 2022	Mar 2023	Jun 2023	Sep 2023	Dec 2023	Mar 2024	Jun 2024	Aug 2024	Sep 2024	Oct 2024 *
Demand	96,797	105,740	115,116	113,698	117,337	120,594	121,218	118,878	128,441	131,819	130,018	130,726	129,527
Local Currency	84,628	91,724	99,034	97,649	101,214	103,236	103,620	103,343	111,375	115,295	113,060	113,598	113,523
Foreign Currencies	12,169	14,016	16,082	16,049	16,123	17,358	17,598	15,535	17,066	16,524	16,958	17,127	16,004
Savings	103,384	114,424	109,397	113,915	117,358	121,074	120,086	120,893	128,851	138,854	136,242	135,835	138,975
Local Currency	95,146	107,338	101,495	105,169	109,408	113,242	112,478	113,694	121,611	131,896	129,019	129,145	131,388
Foreign Currencies	8,238	7,086	7,902	8,746	7,950	7,832	7,608	7,199	7,240	6,958	7,223	6,690	7,587
Time	119,960	115,483	110,019	118,440	128,342	134,193	144,577	148,944	154,812	145,416	160,628	161,922	159,941
Local Currency	104,320	104,235	94,641	103,559	110,575	112,499	120,163	125,294	129,315	117,286	126,407	131,119	127,548
Foreign Currencies	15,640	11,248	15,378	14,881	17,767	21,694	24,414	23,650	25,497	28,130	34,221	30,803	32,393
Total Deposits **	320,141	335,647	334,532	346,053	363,037	375,861	385,881	388,715	412,104	416,089	426,888	428,483	428,443
Total Local Currency	284,094	303,297	295,170	306,377	321,197	328,977	336,261	342,331	362,301	364,477	368,486	373,863	372,459
Total Foreign Currencies	36,047	32,350	39,362	39,676	41,840	46,884	49,620	46,384	49,803	51,612	58,402	54,621	55,983
Commercial Prepayments	3,202	2,601	2,332	2,839	2,744	2,821	2,577	2,725	2,868	2,711	2,870	3,451	3,064

¹ Excluding Inter-Bank Deposits

* Preliminary

** Residents and Non-Residents (Excluding Government Deposits, Commercial Prepayments and Borrowings under Repurchase Agreements)

Table 41 : Time Deposits by Maturity (All Banks) ¹

(In Millions of AED)													
Period	Dec 2020	Dec 2021	Sep 2022	Dec 2022	Mar 2023	Jun 2023	Sep 2023	Dec 2023	Mar 2024	Jun 2024	Aug 2024	Sep 2024	Oct 2024 *
Maturity													
Upto 3 Months	458,803	453,936	476,564	472,546	537,858	579,967	585,455	604,994	669,719	611,807	680,334	697,935	760,602
Above 3 and Upto 6 Months	163,992	152,495	142,383	174,542	204,006	192,519	205,437	209,611	202,645	251,151	252,184	234,806	216,731
Above 6 and Upto 12 Months	176,416	165,463	268,103	280,784	230,914	199,937	219,030	260,649	271,665	300,688	285,098	284,318	274,594
Exceeding 12 Months	65,472	27,210	33,710	38,368	40,660	63,243	43,838	44,255	45,254	46,410	44,432	44,368	45,844
Total	864,683	799,104	920,760	966,240	1,013,438	1,035,666	1,053,760	1,119,509	1,189,283	1,210,056	1,262,048	1,261,427	1,297,771

¹ Excluding Inter-Bank Deposits but Including Government Deposits , Commercial Prepayments and Borrowings under Repurchase Agreements

* Preliminary

Table 42 : Time Deposits by Maturity (National Banks) ¹

(In Millions of AED)													
Period	Dec 2020	Dec 2021	Sep 2022	Dec 2022	Mar 2023	Jun 2023	Sep 2023	Dec 2023	Mar 2024	Jun 2024	Aug 2024	Sep 2024	Oct 2024 *
Maturity													
Upto 3 Months	417,522	420,563	442,469	431,863	492,930	527,445	524,859	545,536	609,233	552,293	608,554	619,312	678,240
Above 3 and Upto 6 Months	150,405	144,128	132,897	164,879	192,855	174,605	187,466	194,611	184,643	226,285	230,997	214,091	197,830
Above 6 and Upto 12 Months	164,263	155,816	255,090	262,934	206,571	181,043	203,234	241,333	249,339	281,069	265,910	265,296	254,719
Exceeding 12 Months	63,131	22,657	31,199	35,718	37,720	60,019	40,529	41,159	42,323	43,567	41,825	41,746	43,369
Total	795,321	743,164	861,655	895,394	930,076	943,112	956,088	1,022,639	1,085,538	1,103,214	1,147,286	1,140,445	1,174,158

¹ Excluding Inter-Bank Deposits but Including Government Deposits , Commercial Prepayments and Borrowings under Repurchase Agreements

* Preliminary

Table 43 : Time Deposits by Maturity (Foreign Banks) ¹

(In Millions of AED)													
Period	Dec 2020	Dec 2021	Sep 2022	Dec 2022	Mar 2023	Jun 2023	Sep 2023	Dec 2023	Mar 2024	Jun 2024	Aug 2024	Sep 2024	Oct 2024 *
Maturity													
Upto 3 Months	41,281	33,373	34,095	40,683	44,928	52,522	60,596	59,458	60,486	59,514	71,780	78,623	82,362
Above 3 and Upto 6 Months	13,587	8,367	9,486	9,663	11,151	17,914	17,971	15,000	18,002	24,866	21,187	20,715	18,901
Above 6 and Upto 12 Months	12,153	9,647	13,013	17,850	24,343	18,894	15,796	19,316	22,326	19,619	19,188	19,022	19,875
Exceeding 12 Months	2,341	4,553	2,511	2,650	2,940	3,224	3,309	3,096	2,931	2,843	2,607	2,622	2,474
Total	69,362	55,940	59,105	70,846	83,362	92,554	97,672	96,870	103,745	106,842	114,762	120,982	123,612

¹ Excluding Inter-Bank Deposits but Including Government Deposits , Commercial Prepayments and Borrowings under Repurchase Agreements

* Preliminary

Table 44 : Time Deposits by Maturity (Conventional Banks) ¹

(In Millions of AED)													
Period	Dec 2020	Dec 2021	Sep 2022	Dec 2022	Mar 2023	Jun 2023	Sep 2023	Dec 2023	Mar 2024	Jun 2024	Aug 2024	Sep 2024	Oct 2024 *
Maturity													
Upto 3 Months	359,381	358,300	394,929	382,472	446,300	482,190	472,298	475,197	533,165	514,350	570,369	578,044	625,847
Above 3 and Upto 6 Months	126,101	118,030	109,868	133,616	160,310	155,430	145,107	174,339	164,910	202,972	194,651	184,750	183,016
Above 6 and Upto 12 Months	134,294	124,102	214,296	230,582	175,913	147,931	175,998	205,467	214,819	213,112	200,757	203,596	192,097
Exceeding 12 Months	58,134	21,182	30,207	34,361	36,765	42,291	38,935	38,924	41,327	40,909	39,566	39,854	41,276
Total	677,910	621,614	749,300	781,031	819,288	827,842	832,338	893,927	954,221	971,343	1,005,343	1,006,244	1,042,236

¹ Excluding Inter-Bank Deposits but Including Government Deposits , Commercial Prepayments and Borrowings under Repurchase Agreements

* Preliminary

Table 45 : Time Deposits by Maturity (Islamic Banks) ¹

(In Millions of AED)													
Period	Dec 2020	Dec 2021	Sep 2022	Dec 2022	Mar 2023	Jun 2023	Sep 2023	Dec 2023	Mar 2024	Jun 2024	Aug 2024	Sep 2024	Oct 2024 *
Maturity													
Upto 3 Months	99,422	95,636	81,635	90,074	91,558	97,777	113,157	129,797	136,554	97,457	109,965	119,892	134,755
Above 3 and Upto 6 Months	37,891	34,465	32,515	40,926	43,696	37,089	60,330	35,272	37,735	48,179	57,533	50,056	33,716
Above 6 and Upto 12 Months	42,122	41,361	53,807	50,202	55,001	52,006	43,032	55,182	56,846	87,576	84,341	80,722	82,497
Exceeding 12 Months	7,338	6,028	3,503	4,007	3,895	20,952	4,903	5,331	3,927	5,501	4,866	4,514	4,568
Total	186,773	177,490	171,460	185,209	194,150	207,824	221,422	225,582	235,062	238,713	256,705	255,184	255,536

¹ Excluding Inter-Bank Deposits but Including Government Deposits , Commercial Prepayments and Borrowings under Repurchase Agreements

* Preliminary

Table 46 : Currency Issued ¹

(In Millions of AED)													
Item	Dec 2020	Dec 2021	Sep 2022	Dec 2022	Mar 2023	Jun 2023	Sep 2023	Dec 2023	Mar 2024	Jun 2024	Aug 2024	Sep 2024	Oct 2024 *
Total Notes Issued (1) **	109,416	110,503	113,752	118,668	127,847	135,105	125,774	134,393	144,853	143,943	144,125	145,490	146,625
Total Coins Issued (2) ***	1,288	1,312	1,337	1,343	1,361	1,373	1,379	1,387	1,995	1,421	1,421	1,421	1,429
Total Currency Issued	110,704	111,815	115,089	120,011	129,208	136,478	127,153	135,780	146,848	145,364	145,546	146,911	148,054

¹ *Currency Issued = Currency in Circulation plus Cash at Banks*

* *Preliminary*

** *Excluding Mutilated Notes*

*** *Excluding Issued Gold Coins*

Table 47 : Cheques Cleared Statistics ¹

Item	Dec 2020	Dec 2021	Sep 2022	Dec 2022	Mar 2023	Jun 2023	Sep 2023	Dec 2023	Mar 2024	Jun 2024	Aug 2024	Sep 2024	Oct 2024 *
Cheques Cleared													
Number of Cheques	21,246,540	21,283,261	16,260,678	21,819,330	5,564,665	10,809,658	16,451,282	22,125,474	5,657,667	11,027,238	15,465,747	17,364,933	19,460,064
Amount (<i>In Millions of AED</i>)	990,317	1,096,076	913,780	1,225,172	306,450	613,345	930,656	1,263,324	328,841	646,652	904,996	1,014,878	1,140,994

¹ Cumulative data

* Preliminary

Table 48 : UAE Domestic Fund Transfer System Statistics ¹

Item	Dec 2020	Dec 2021	Sep 2022	Dec 2022	Mar 2023	Jun 2023	Sep 2023	Dec 2023	Mar 2024	Jun 2024	Aug 2024	Sep 2024	Oct 2024 *
Customer to Customer Trfers													
Number of Transfers	50,815,931	60,572,382	54,063,774	74,540,998	20,742,330	41,997,708	65,046,762	89,505,431	25,556,480	52,197,172	71,269,149	80,569,401	90,570,476
Amount (<i>In Millions of AED</i>)	3,395,642	3,868,969	3,577,033	4,910,567	1,417,924	2,938,683	4,463,925	6,140,128	1,687,838	3,493,837	4,708,390	5,301,604	5,976,087
Bank to Bank Trfers													
Number of Transfers	458,646	537,239	464,789	633,663	164,304	323,507	497,283	674,486	179,531	362,945	491,510	554,573	623,557
Amount (<i>In Millions of AED</i>)	5,741,066	5,723,490	5,640,876	7,797,467	2,478,089	5,071,672	7,915,594	11,018,872	2,839,971	5,829,263	8,038,528	9,036,713	10,161,366
Total Domestic Fund Trfers													
Number of Transfers	51,274,577	61,109,621	54,528,563	75,174,661	20,906,634	42,321,215	65,544,045	90,179,917	25,736,011	52,560,117	71,760,659	81,123,974	91,194,033
Amount (<i>In Millions of AED</i>)	9,136,708	9,592,459	9,217,909	12,708,034	3,896,013	8,010,355	12,379,519	17,159,000	4,527,809	9,323,100	12,746,918	14,338,317	16,137,453

¹ Cumulative data

* Preliminary

Table 49 : Banks and Branches Network Statistics (Quarterly)

Item	Dec 2020		Dec 2021		Mar 2022		Jun 2022		Sep 2022		Dec 2022		Mar 2023		Jun 2023		Sep 2023		Dec 2023		Mar 2024		Jun 2024		Sep 2024 *	
	HO	Branches	HO	Branches	HO	Branches	HO	Branches	HO	Branches	HO	Branches	HO	Branches	HO	Branches	HO	Branches	HO	Branches	HO	Branches	HO	Branches	HO	Branches
National Banks	21	541	22	514	22	511	23	508	23	506	22	498	22	494	22	493	22	492	22	489	23	484	23	482	23	482
- Abu Dhabi	5	178	6	174	6	173	6	172	7	170	7	169	7	169	7	169	7	168	7	166	7	162	7	160	7	159
- Dubai	8	209	8	192	8	190	9	190	8	190	7	186	7	183	7	183	7	183	7	182	7	182	7	181	7	182
- Sharjah	4	79	4	76	4	76	4	76	4	76	4	75	4	75	4	74	4	74	4	74	4	74	4	75	4	75
- RAK	1	27	1	26	1	26	1	25	1	25	1	23	1	23	1	23	1	23	1	23	1	22	1	22	1	22
- Ajman	1	17	1	16	1	16	1	16	1	16	1	16	1	16	1	16	1	16	1	16	2	16	2	16	2	16
- UAQ	1	7	1	7	1	7	1	6	1	6	1	6	1	6	1	6	1	6	1	6	1	6	1	6	1	6
- Fujairah	1	24	1	23	1	23	1	23	1	23	1	23	1	22	1	22	1	22	1	22	1	22	1	22	1	22
Foreign Banks **	27	73	27	74	27	74	27	74	27	74	28	73	28	72	28	72	28	72	28	72	27	72	27	72	27	73
- Abu Dhabi	8	29	8	28	8	28	8	28	8	28	9	27	9	26	9	26	9	26	9	26	8	26	8	26	8	26
- Dubai	19	23	19	25	19	25	19	25	19	25	19	25	19	25	19	25	19	25	19	25	19	25	19	25	19	26
- Sharjah	-	13	-	13	-	13	-	13	-	13	-	13	-	13	-	13	-	13	-	13	-	13	-	13	-	13
- RAK	-	5	-	5	-	5	-	5	-	5	-	5	-	5	-	5	-	5	-	5	-	5	-	5	-	5
- Ajman	-	1	-	1	-	1	-	1	-	1	-	1	-	1	-	1	-	1	-	1	-	1	-	1	-	1
- UAQ	-	-	-	-	-	-	-	-	-	-	-	-	-	-	-	-	-	-	-	-	-	-	-	-	-	-
- Fujairah	-	2	-	2	-	2	-	2	-	2	-	2	-	2	-	2	-	2	-	2	-	2	-	2	-	2
Wholesale Banks	10	-	10	-	10	-	10	-	10	-	11	-	11	-	11	-	11	-	11	-	11	-	11	-	11	-
- Abu Dhabi	6	-	6	-	6	-	6	-	6	-	6	-	6	-	6	-	6	-	6	-	6	-	6	-	6	-
- Dubai	4	-	4	-	4	-	4	-	4	-	5	-	5	-	5	-	5	-	5	-	5	-	5	-	5	-
- Sharjah	-	-	-	-	-	-	-	-	-	-	-	-	-	-	-	-	-	-	-	-	-	-	-	-	-	-
- RAK	-	-	-	-	-	-	-	-	-	-	-	-	-	-	-	-	-	-	-	-	-	-	-	-	-	-
- Ajman	-	-	-	-	-	-	-	-	-	-	-	-	-	-	-	-	-	-	-	-	-	-	-	-	-	-
- UAQ	-	-	-	-	-	-	-	-	-	-	-	-	-	-	-	-	-	-	-	-	-	-	-	-	-	-
- Fujairah	-	-	-	-	-	-	-	-	-	-	-	-	-	-	-	-	-	-	-	-	-	-	-	-	-	-
Total	58	614	59	588	59	585	60	582	60	580	61	571	61	566	61	565	61	564	61	561	61	556	61	554	61	555
Total Excluding Wholesale Banks	48	614	49	588	49	585	50	582	50	580	50	571	50	566	50	565	50	564	50	561	50	556	50	554	50	555

* Preliminary

** Does not include number of wholesale banks which is reported seperately